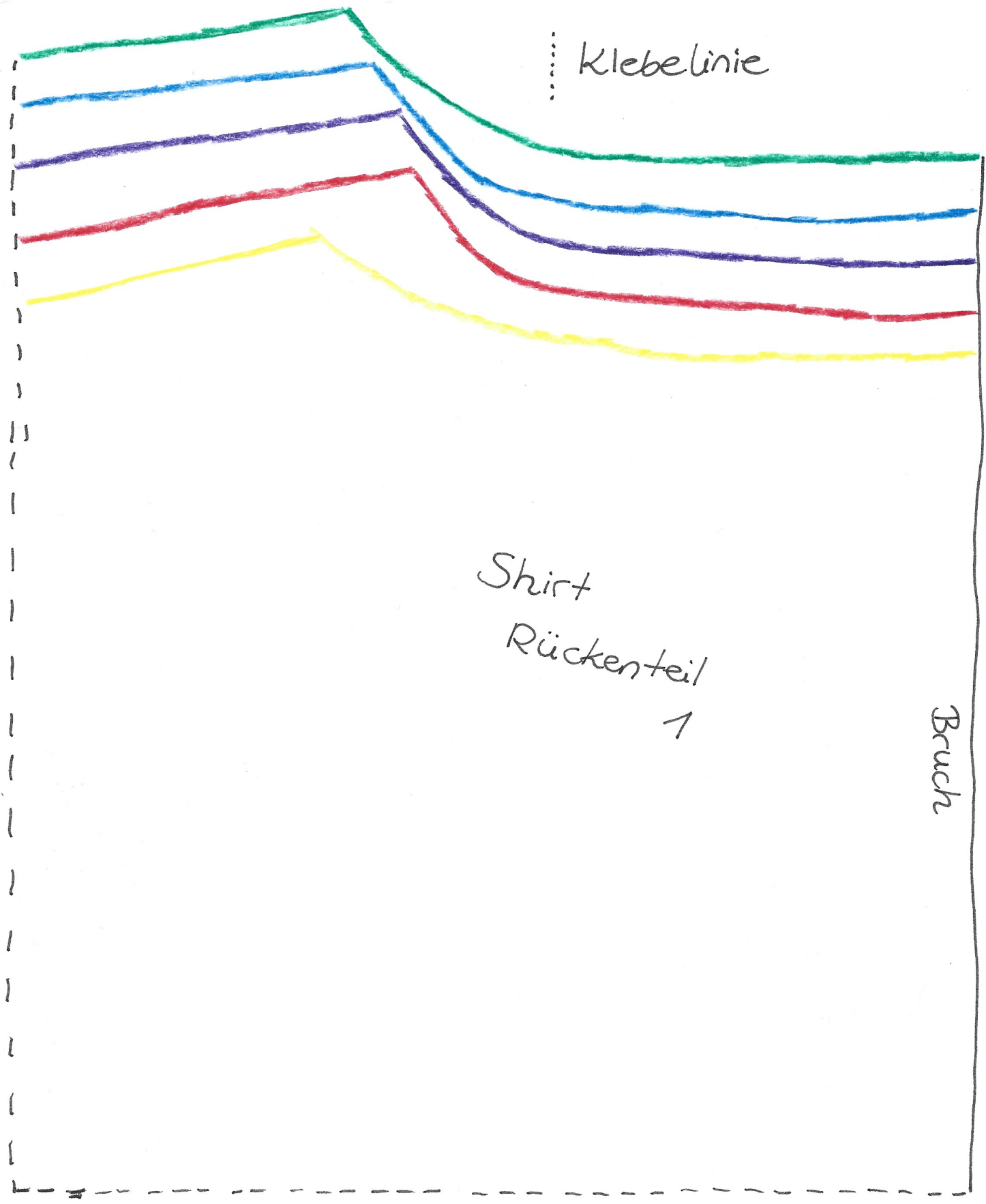


Gr. S Gr. L Gr. XXL

Gr. M Gr. XL

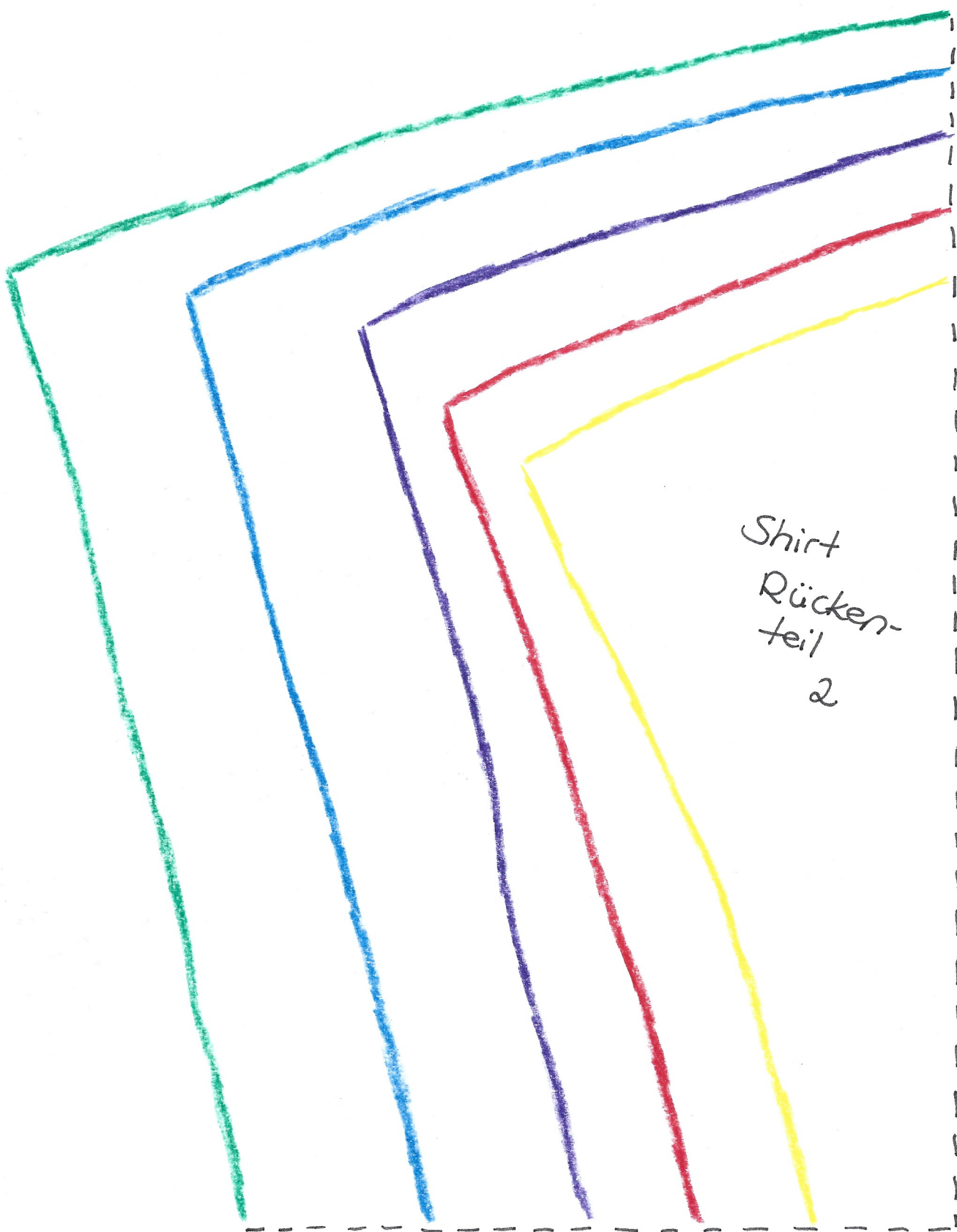
Schnittlinie

Klebelinie



Shirt
Rückenteil
1

Bruch

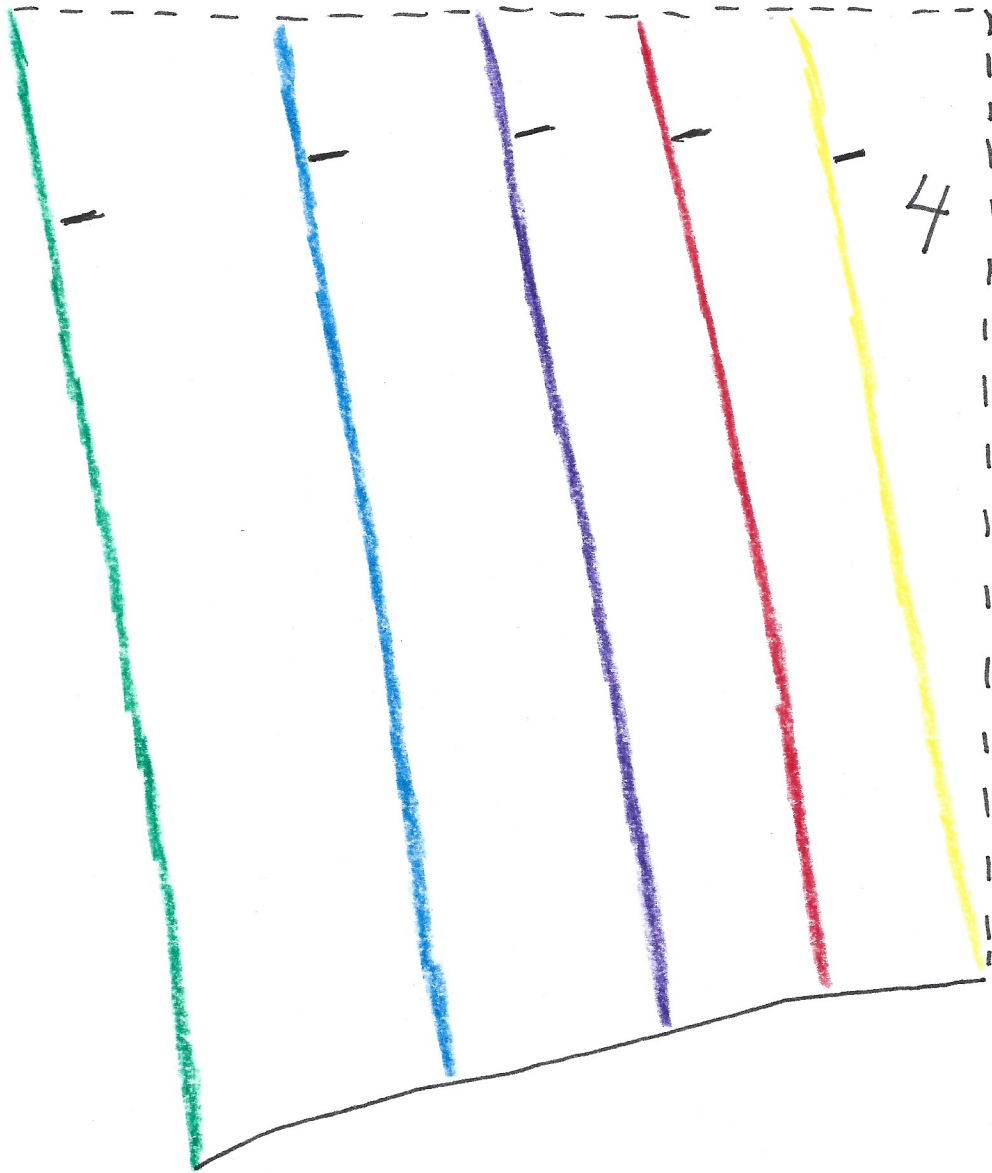


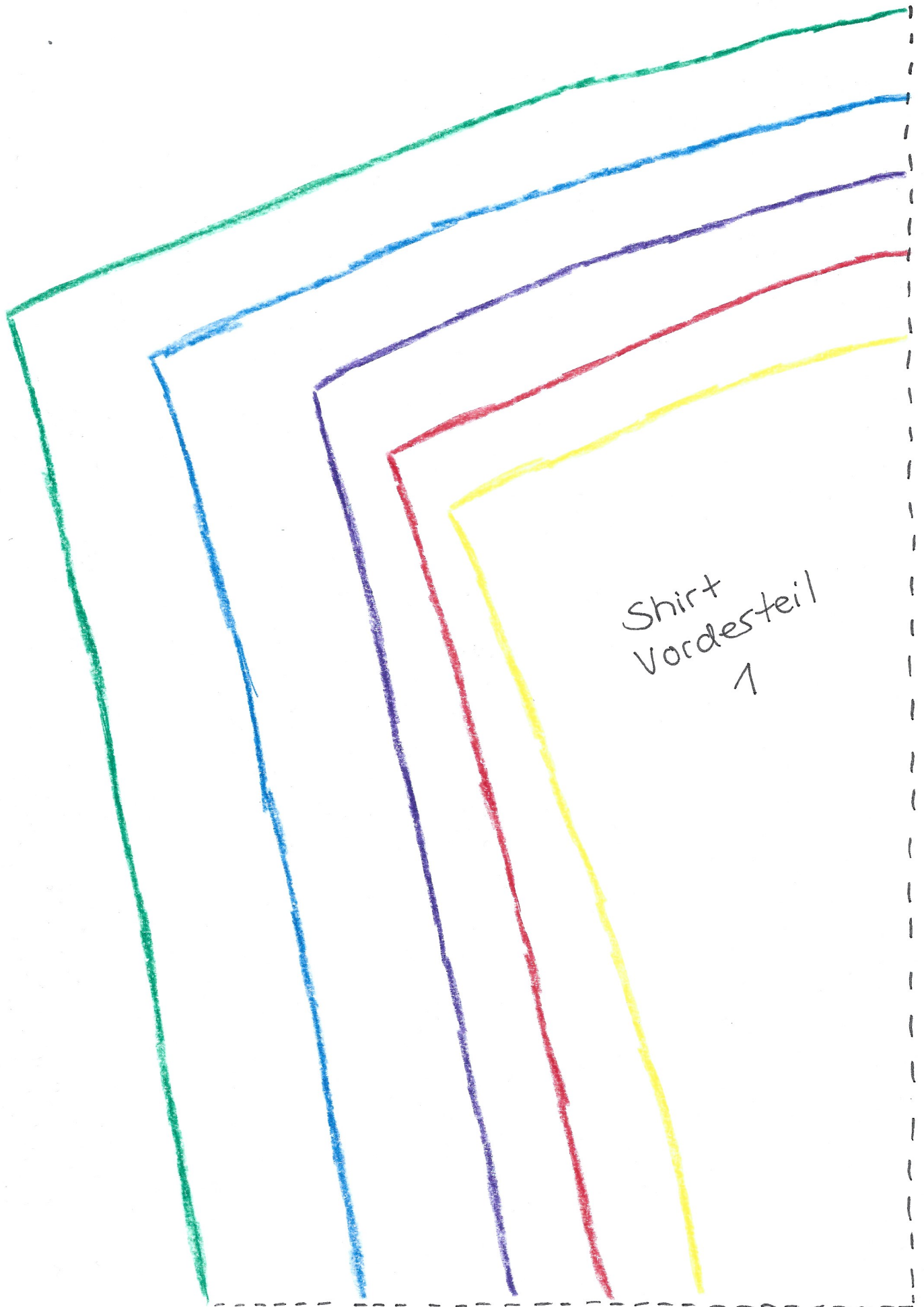
Shirt
Rücken-
teil
2

Shirt
Rückenteil
3

Bruch

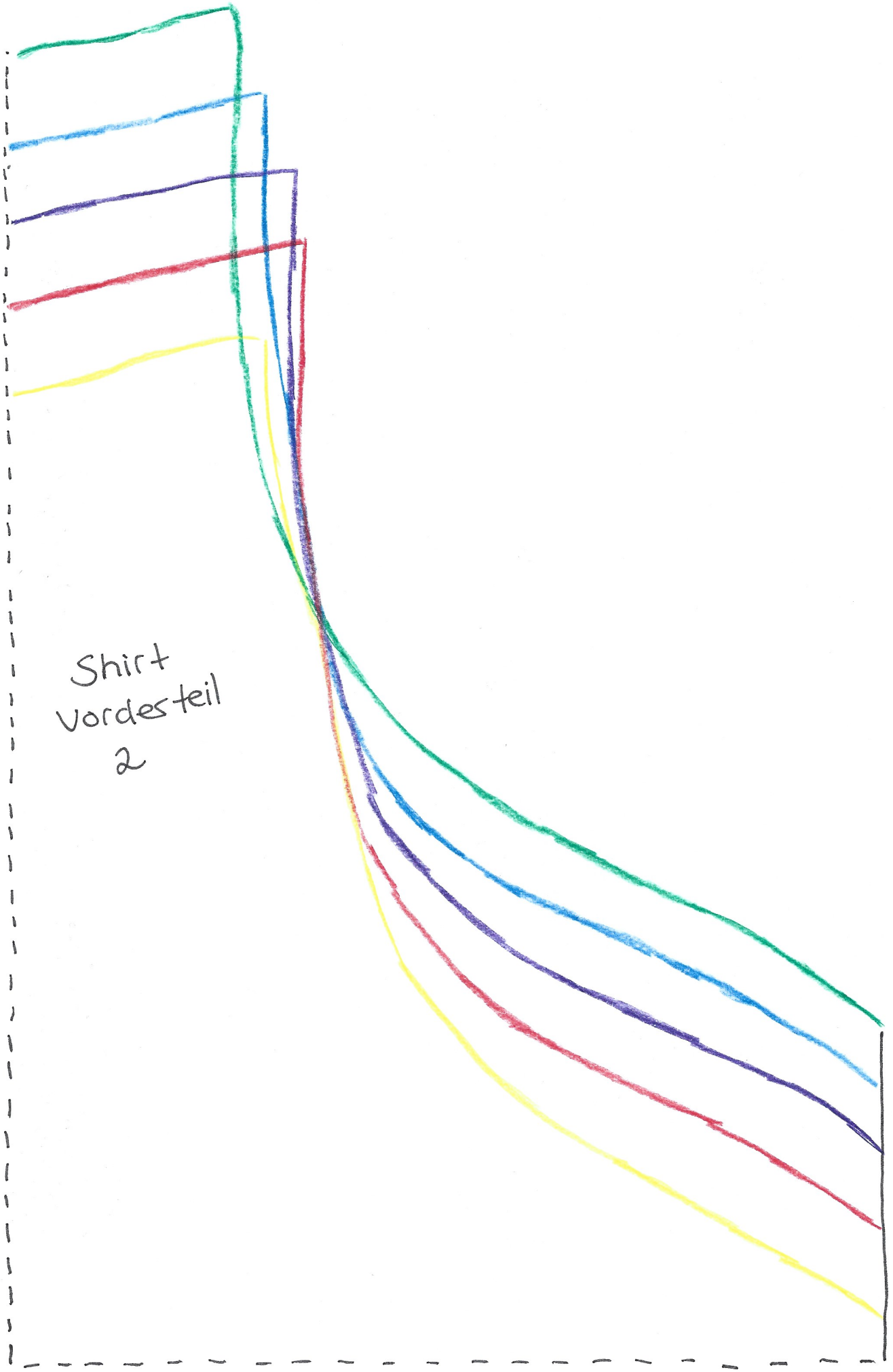
Shirt Rückenteil 4





Shirt
Vorderteil
1

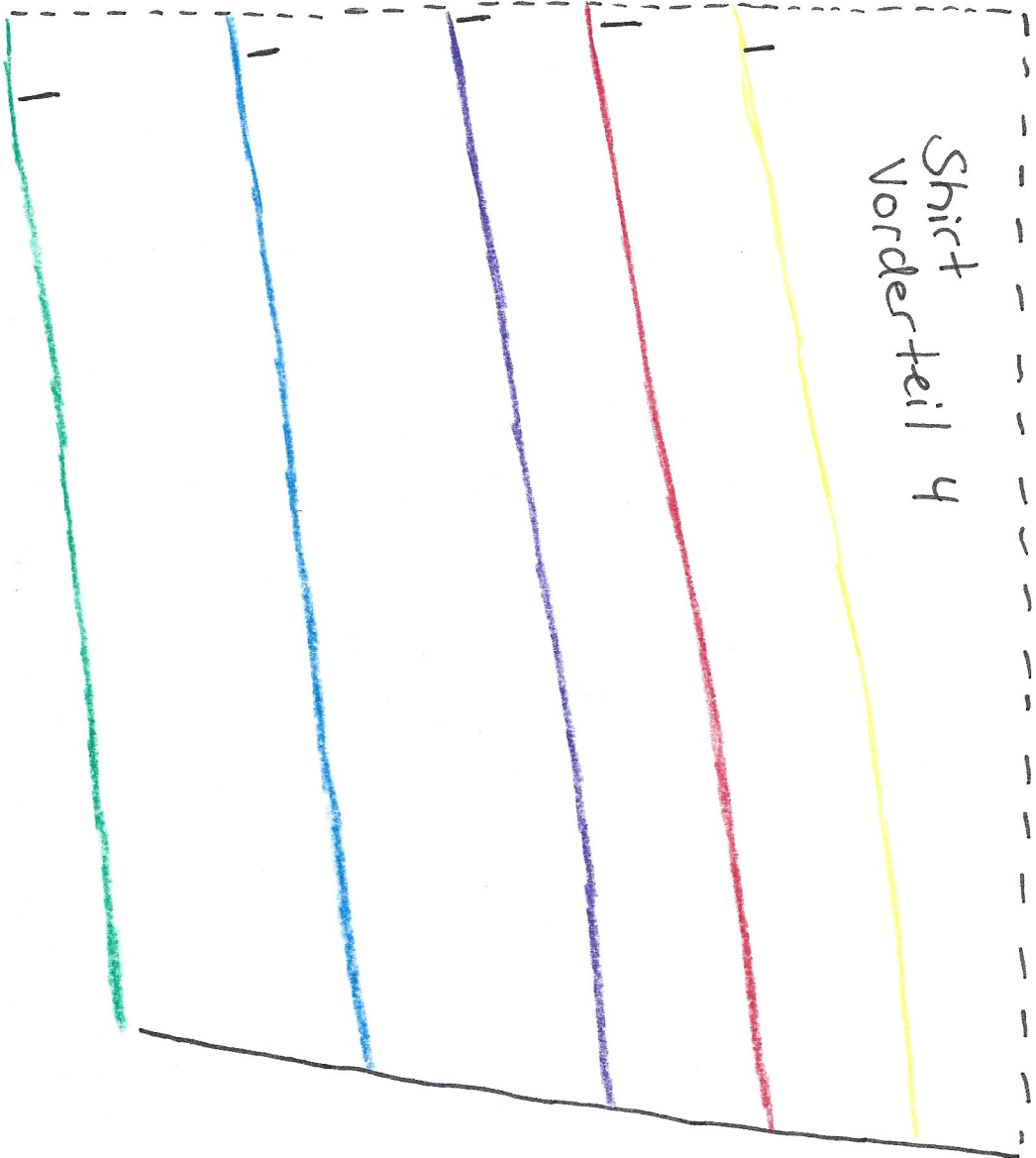
Shirt
Vorderteil
2




Bruch

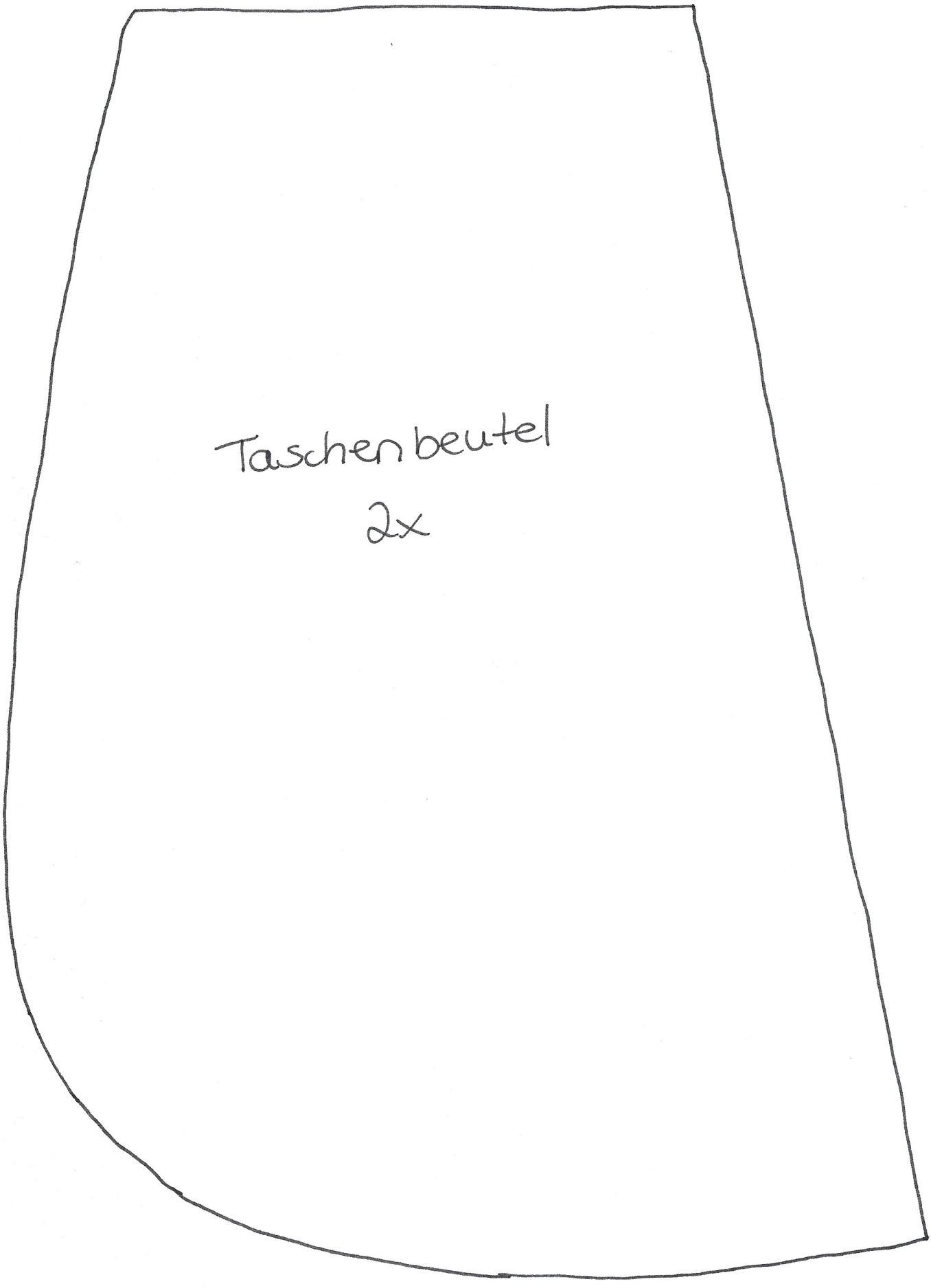
Shirt
Vorderteil
3

Shirt
Vorder teil 4



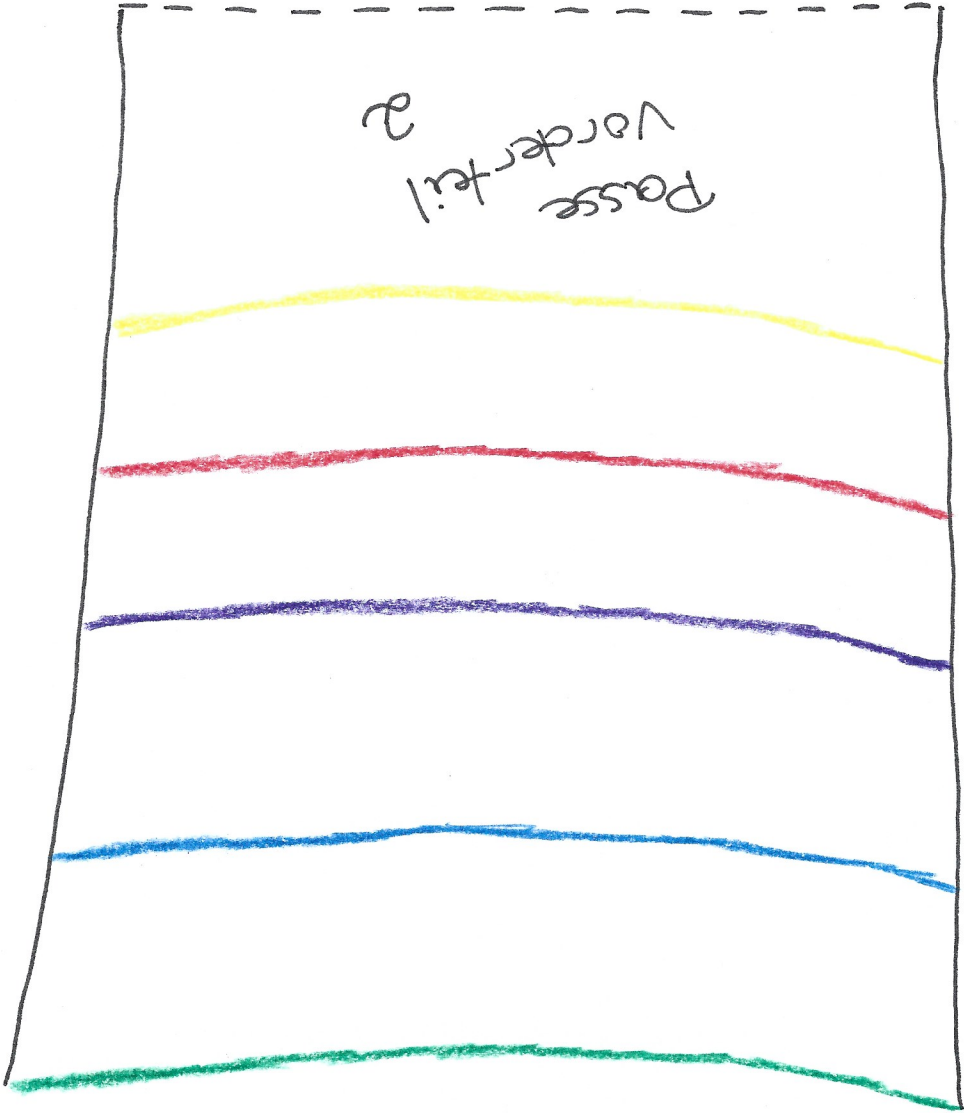
A hand-drawn technical sketch of a pocket bag pattern. The shape is roughly rectangular with a curved bottom edge and a small notch on the right side. The drawing is simple, using a single black line on a white background.

Taschenbeleg
2x

A hand-drawn black outline of a bag pattern piece on a white background. The shape is roughly trapezoidal with a curved bottom edge. The top edge is slightly wider than the bottom edge. The left side is slightly curved inward, and the right side is slightly curved outward.

Taschenbeutel

2x



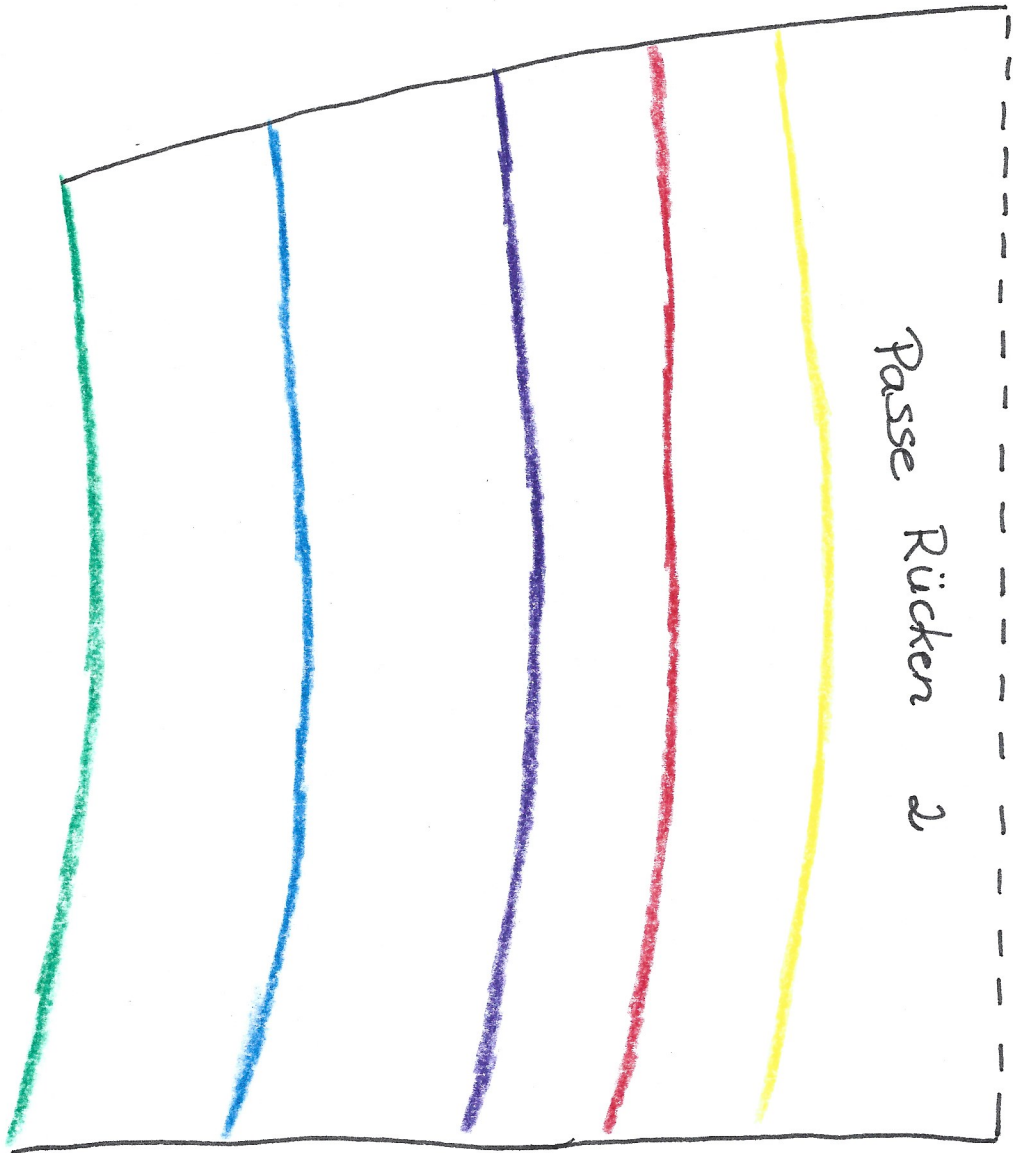
Passe
Vorderteil
2

Bruch

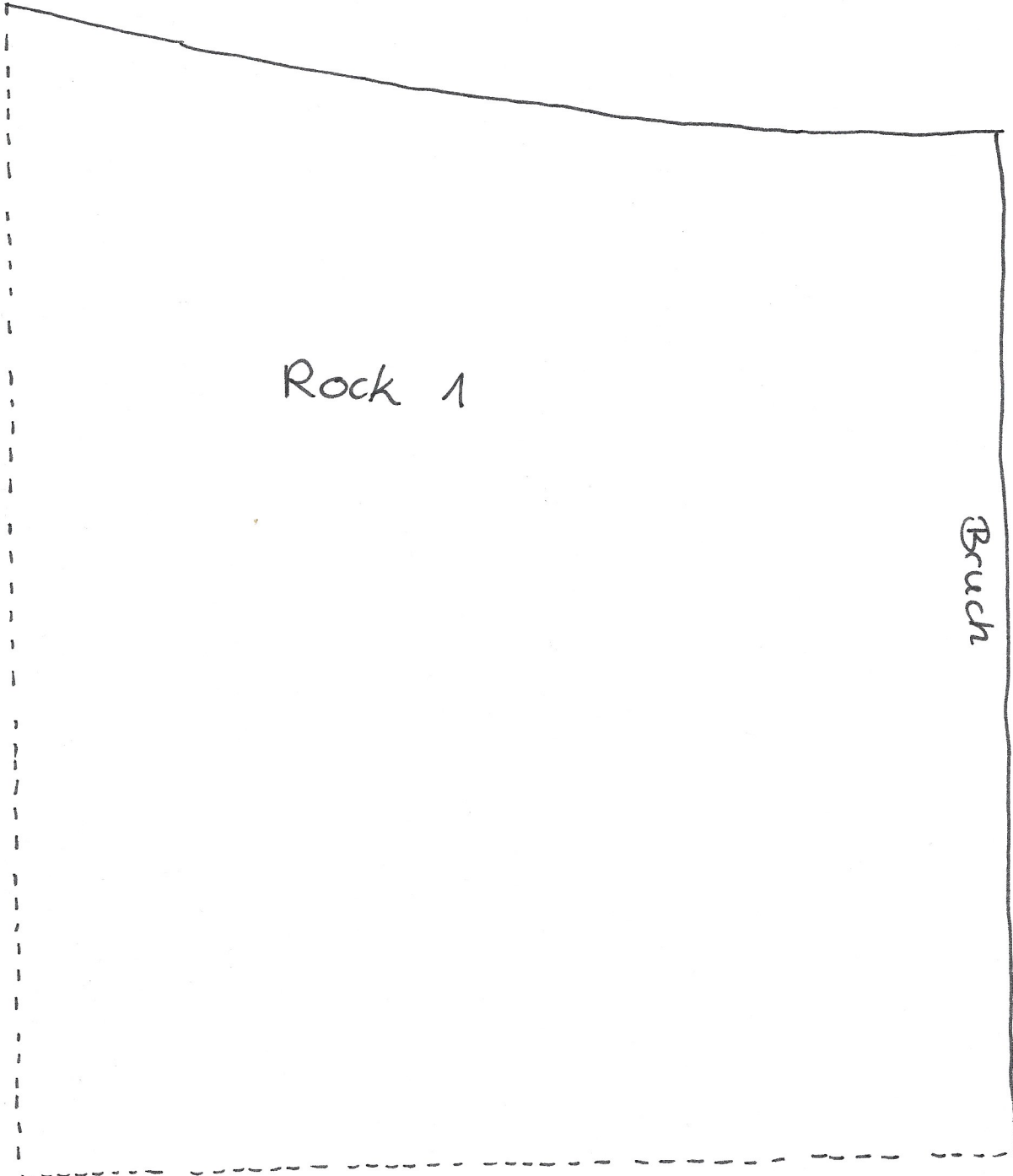
Passe
Vorderteil
↘

Bruch

Passe
Rücken 1

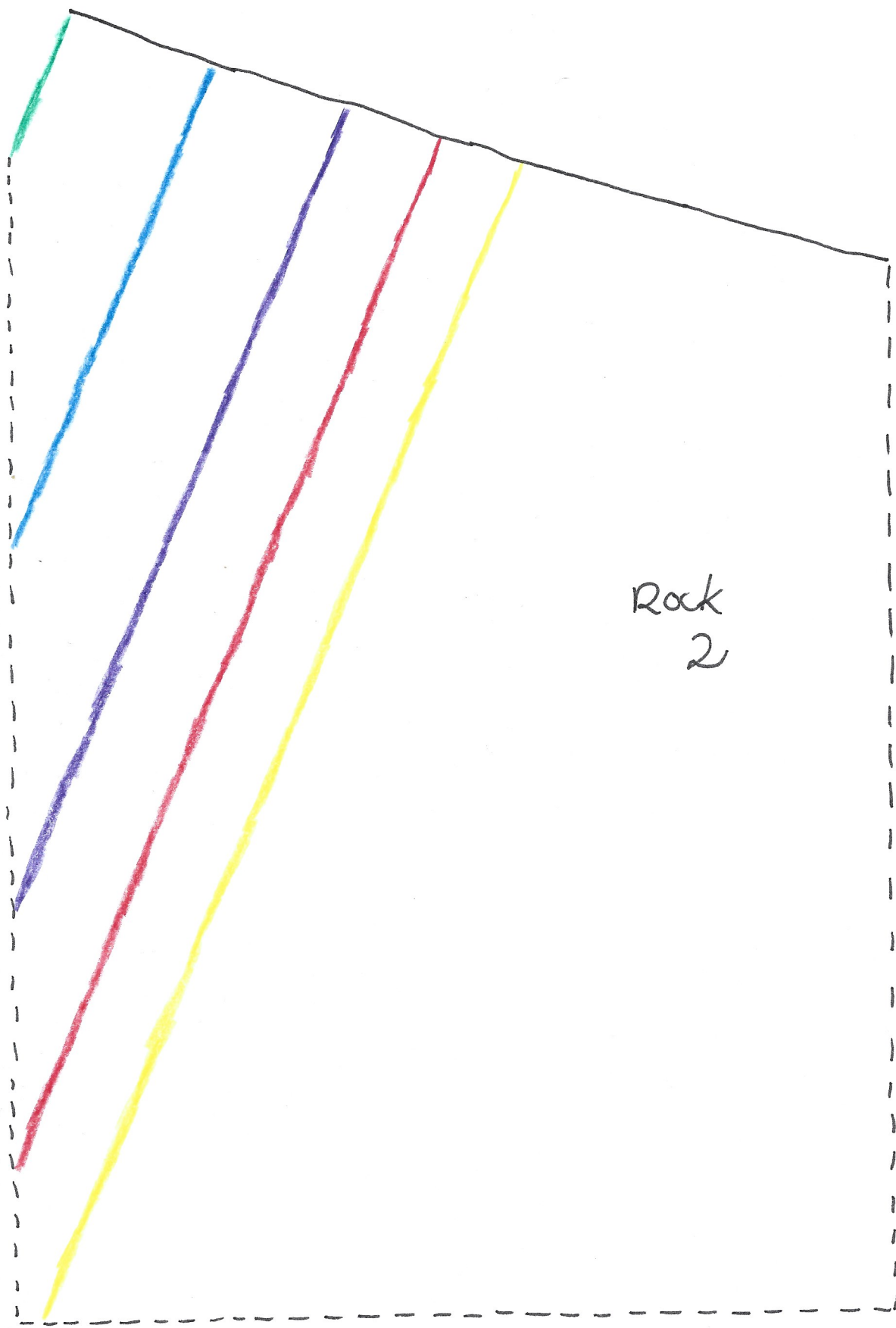


Passe Rücken 2

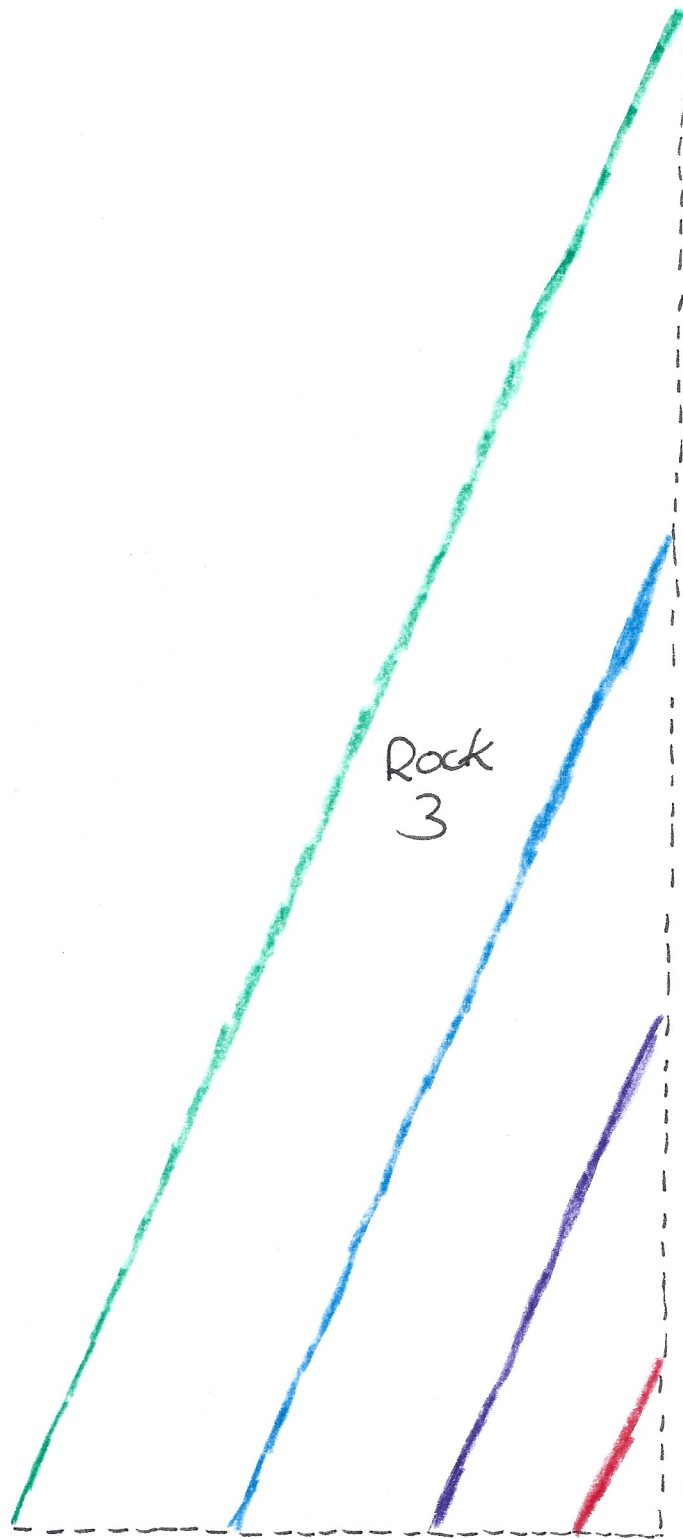


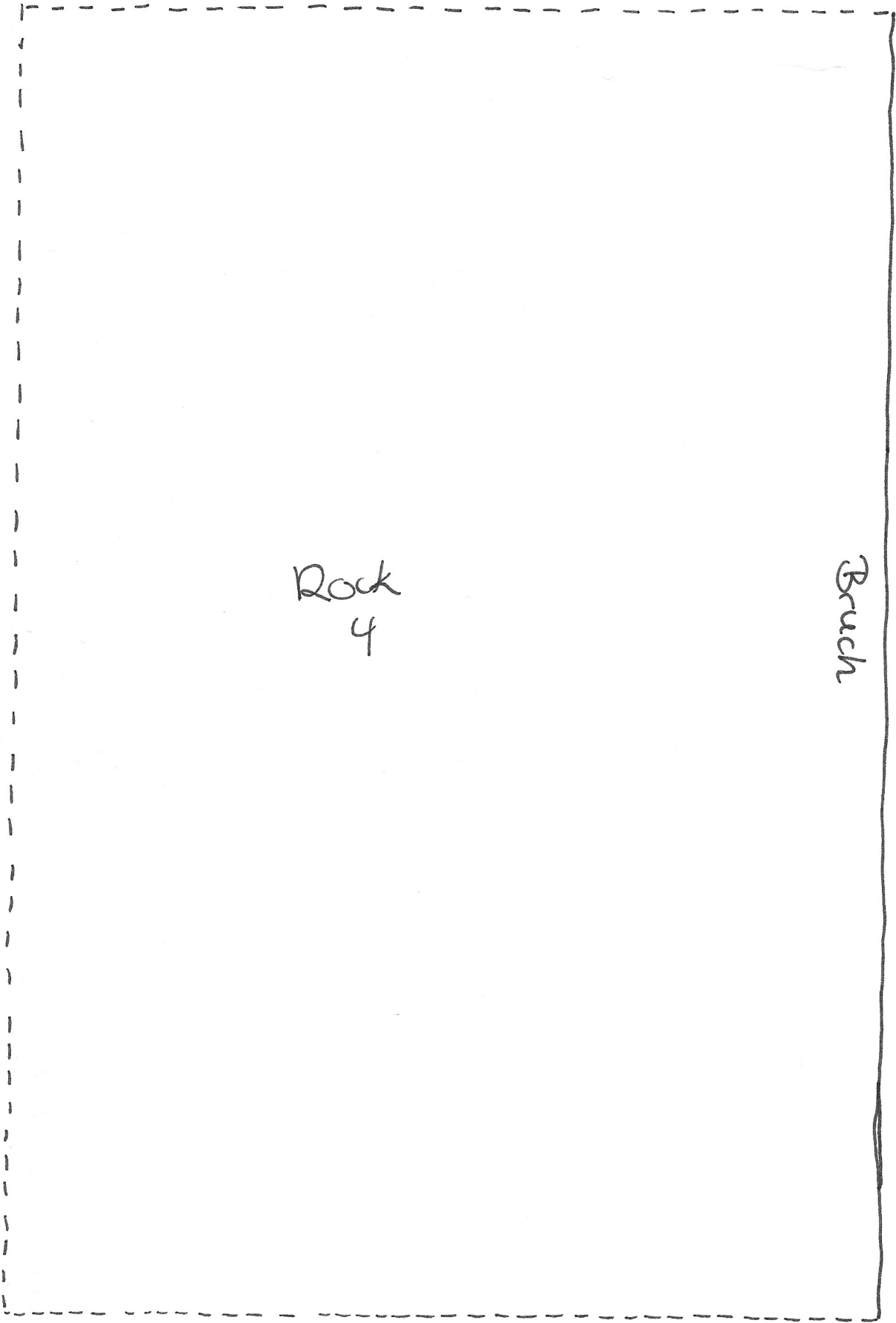
Rock 1

Bruch



Rock
2



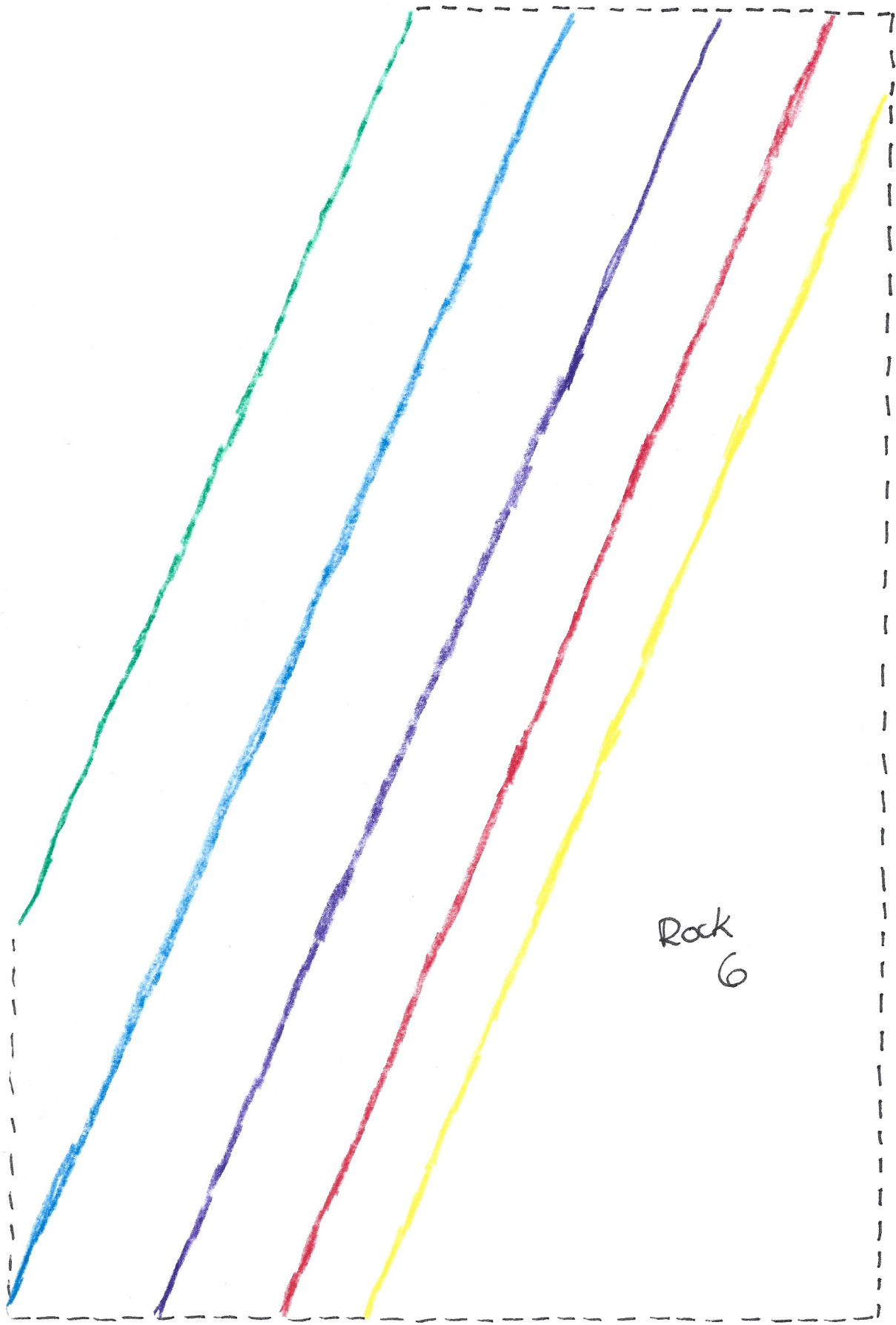


Rock
4

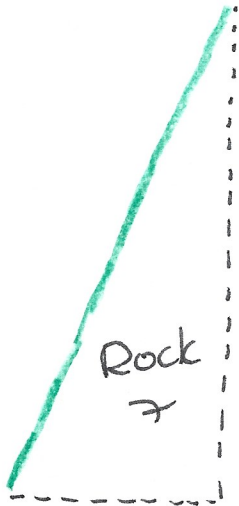
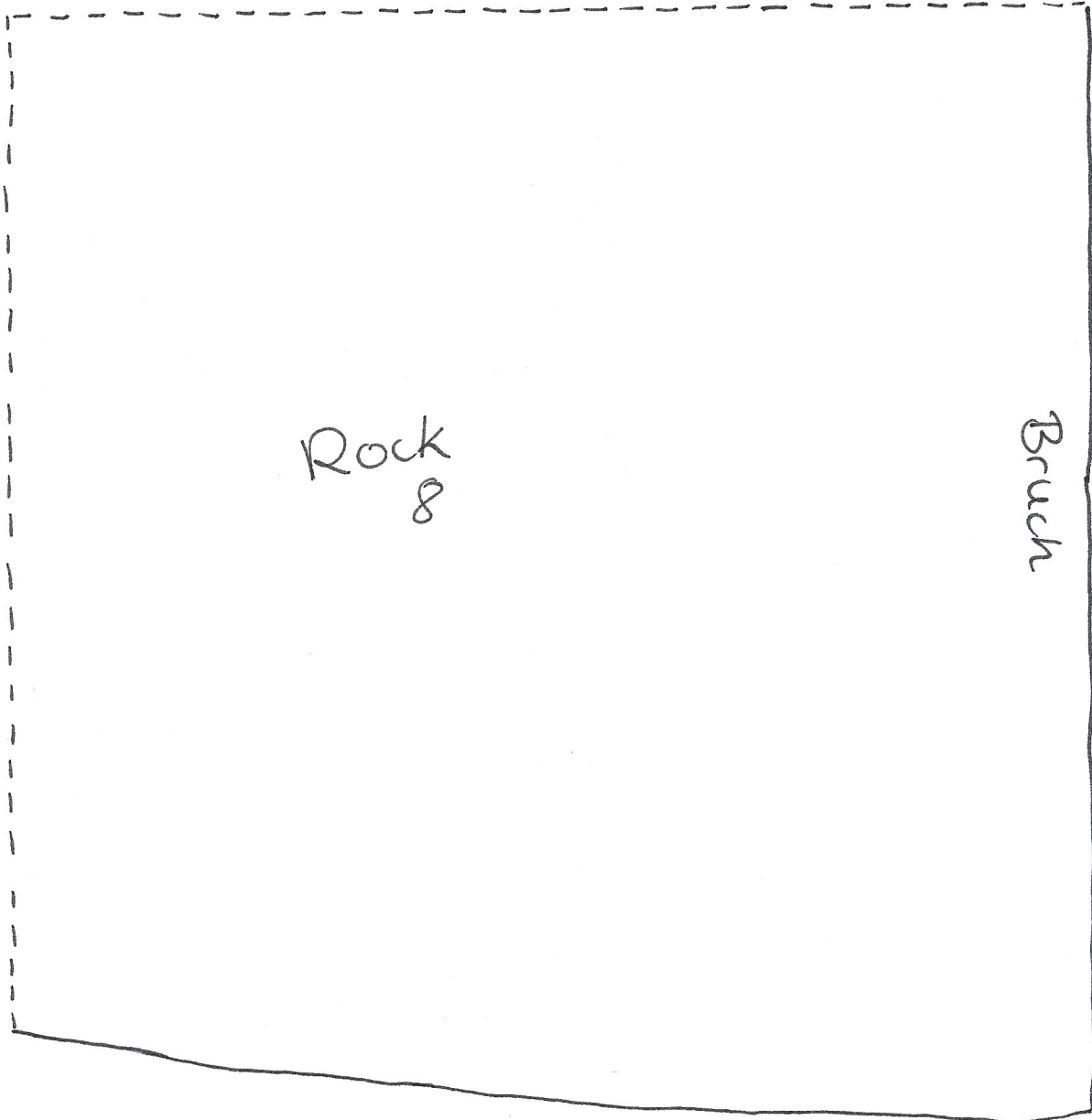
Buch

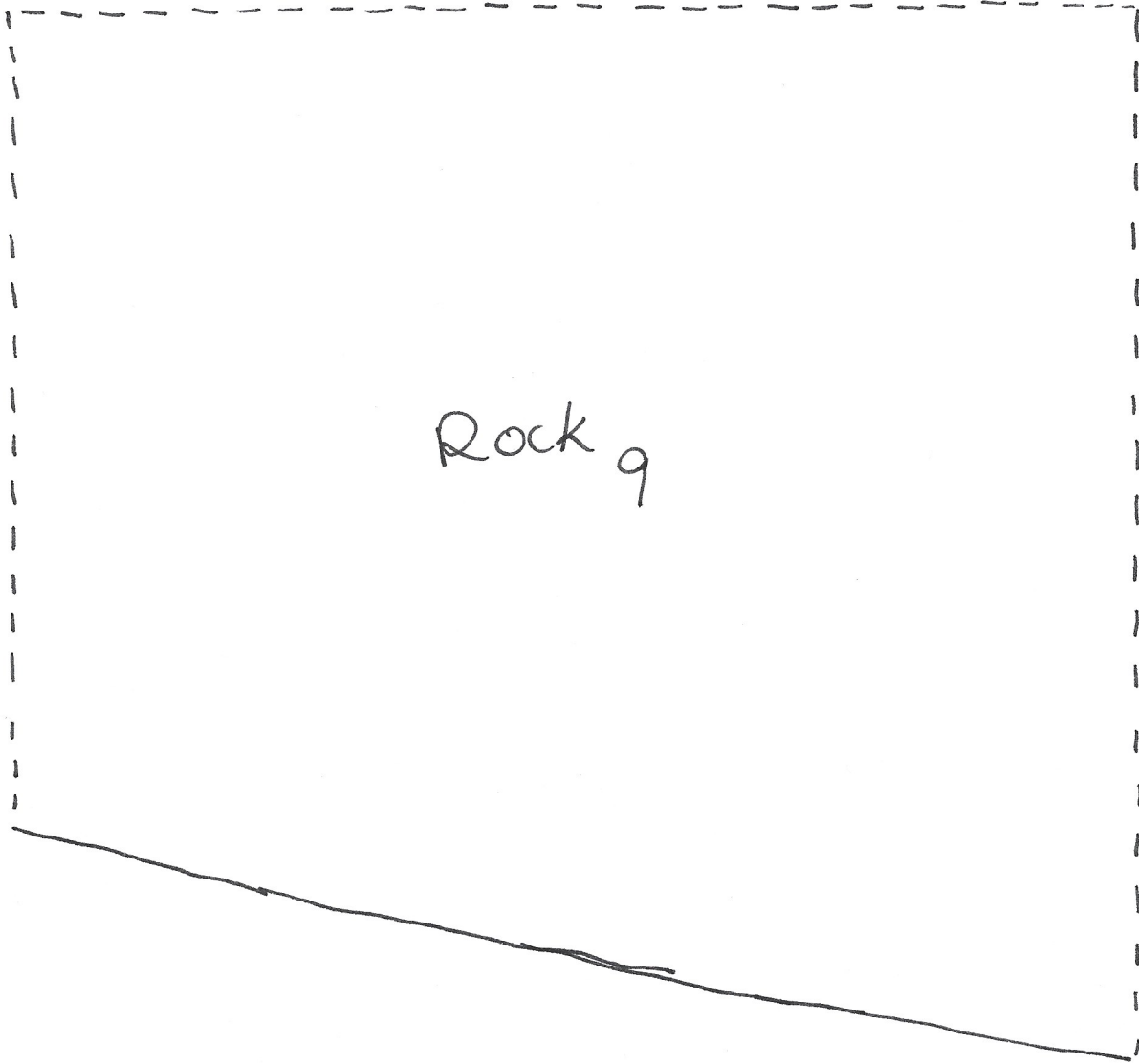


Rock
5



Rock
6





Rock 9

