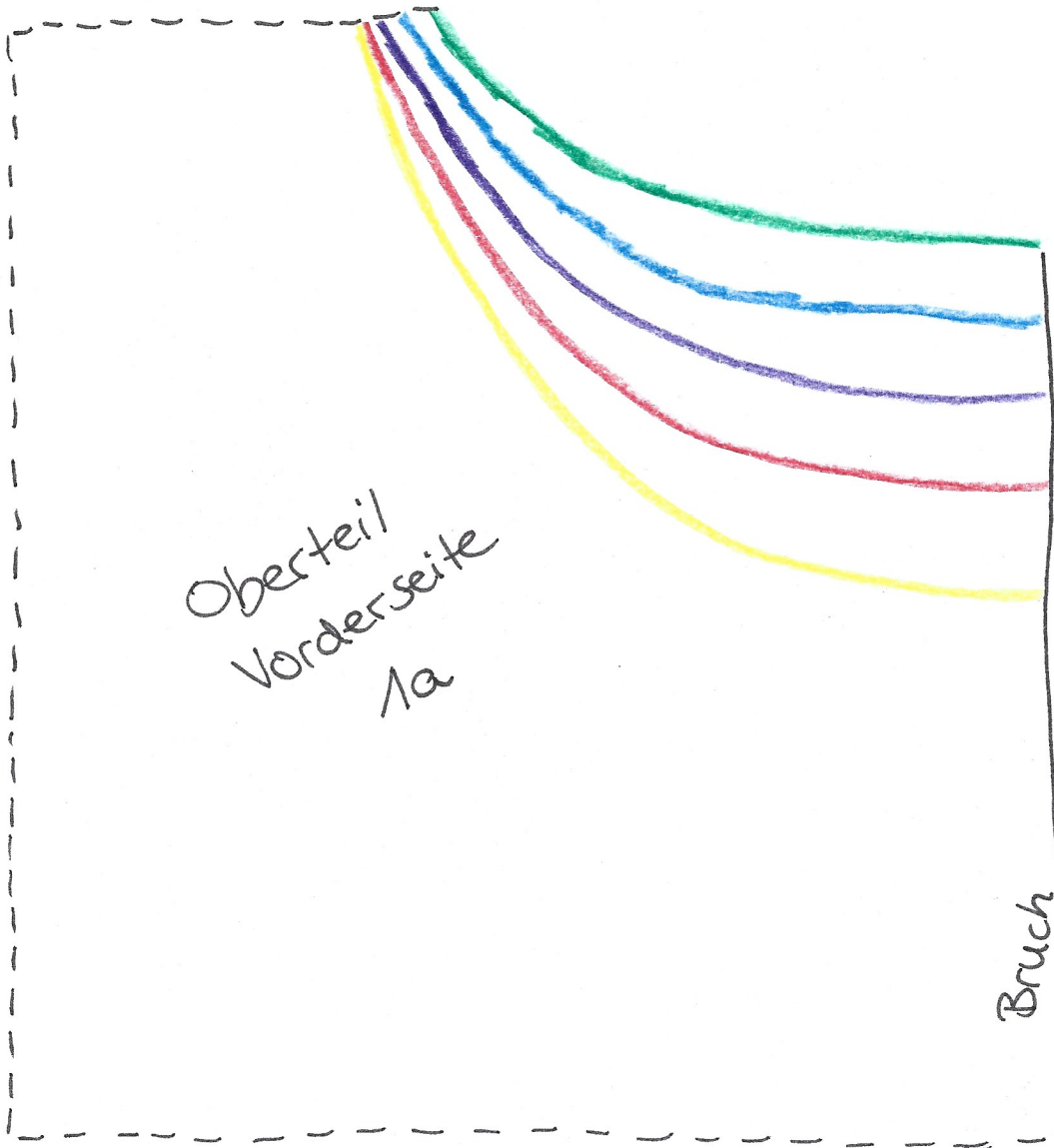
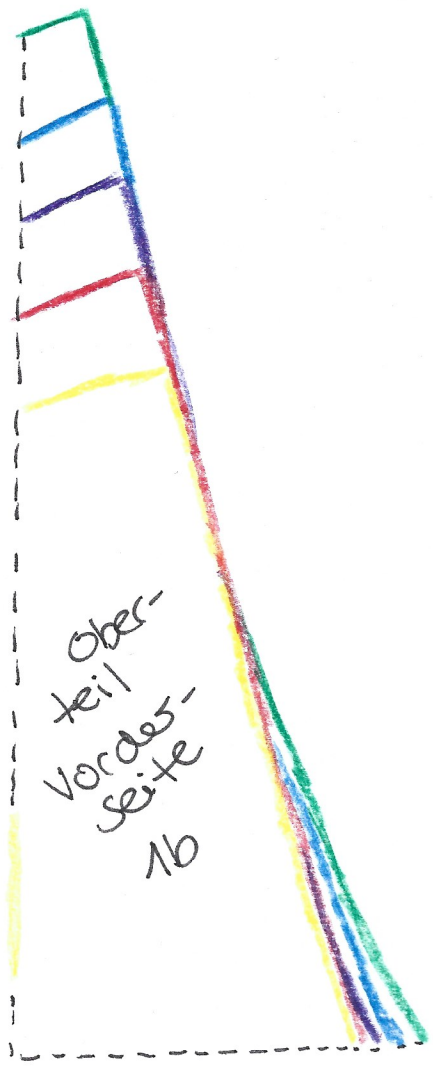
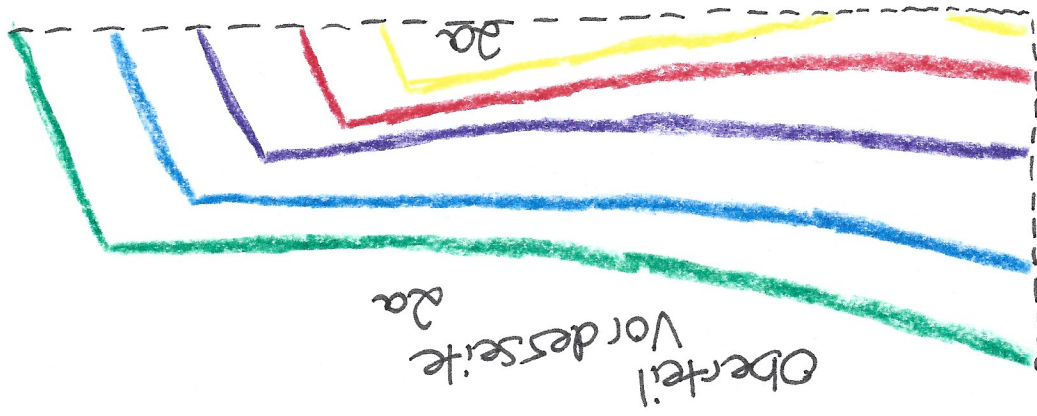
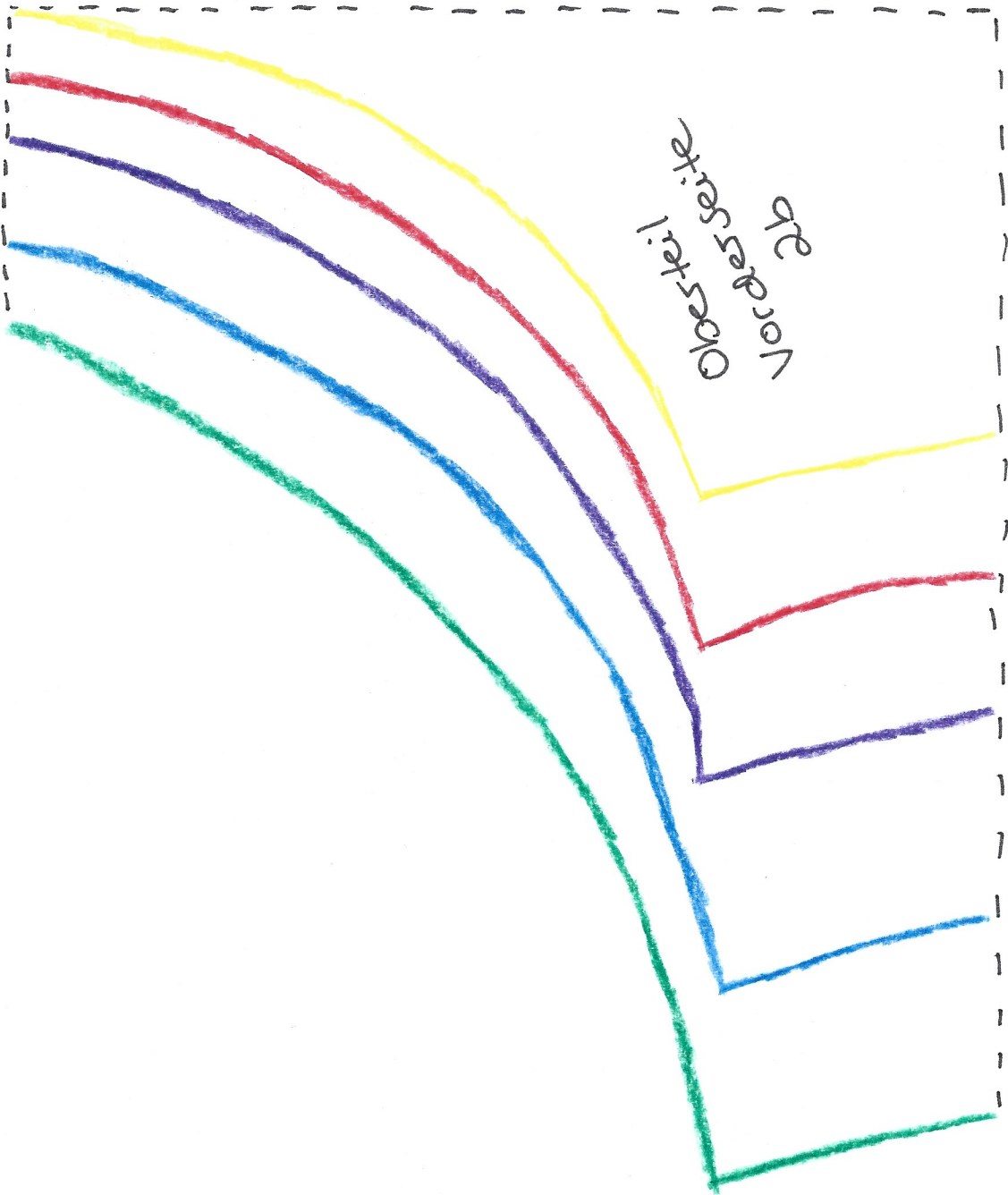
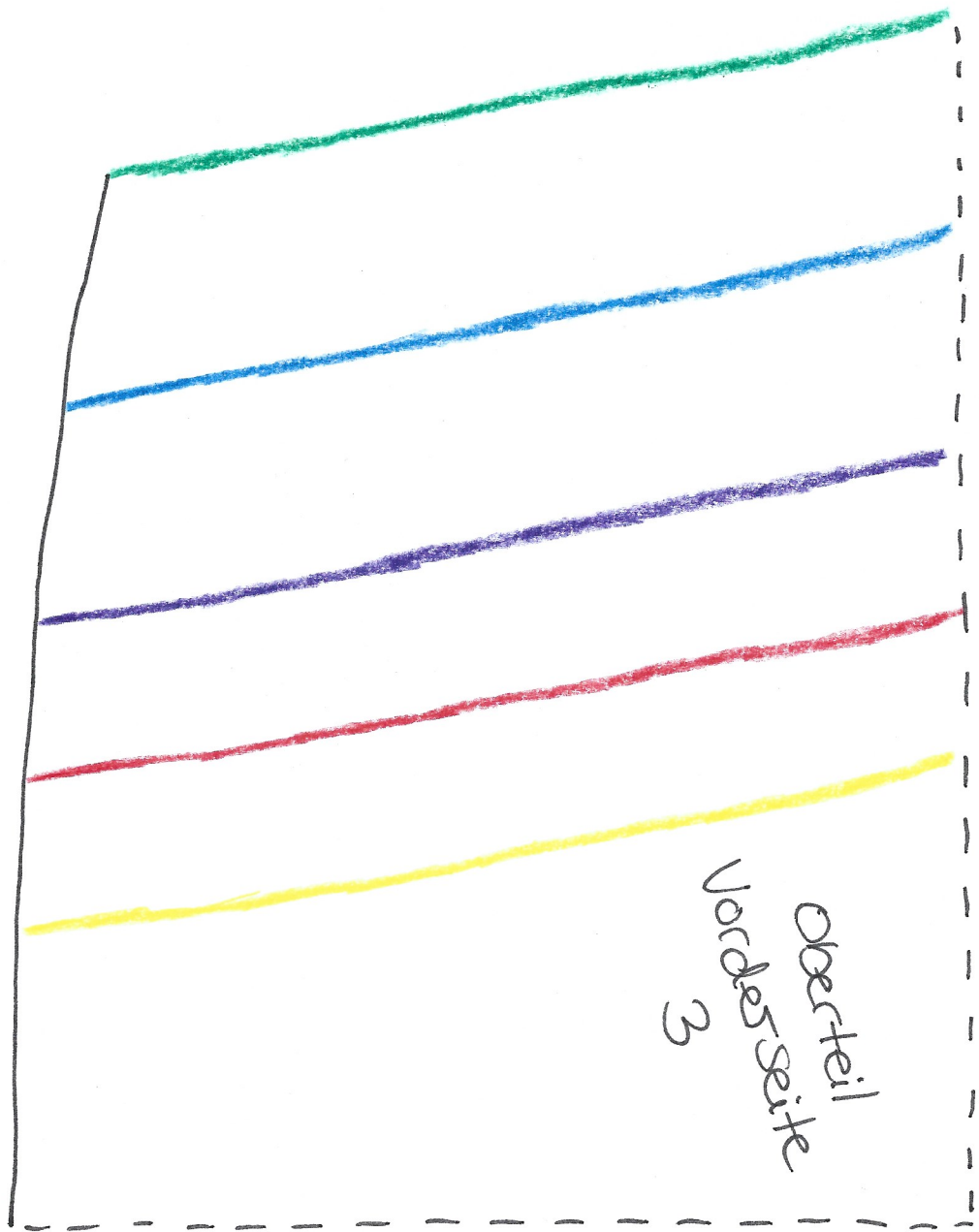


- | | | | | |
|---|-------|---|---------|---------------|
|  | Gr. S |  | Gr. XL | Schnittlinie |
|  | Gr. M |  | Gr. XXL | : Klebe Linie |
|  | Gr. L | | | |

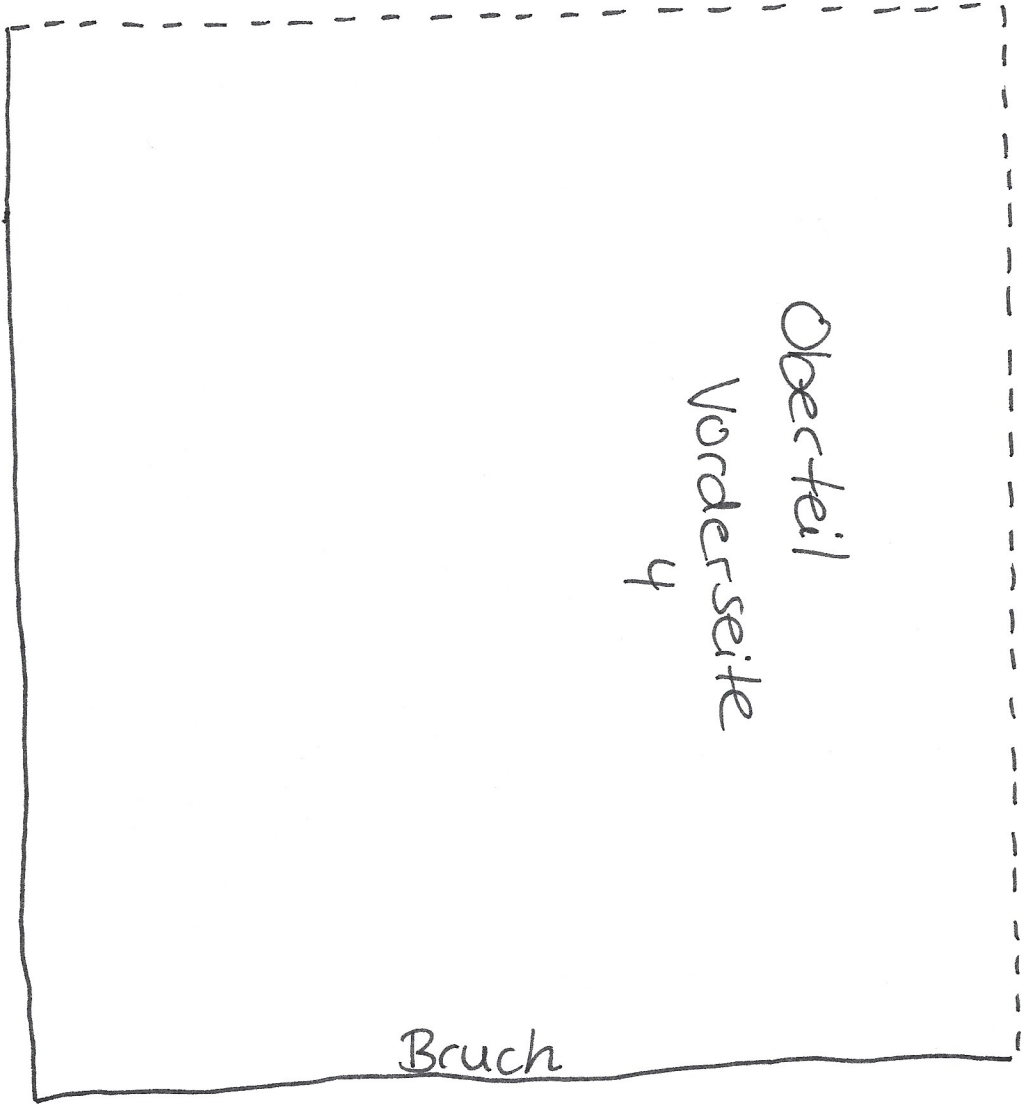


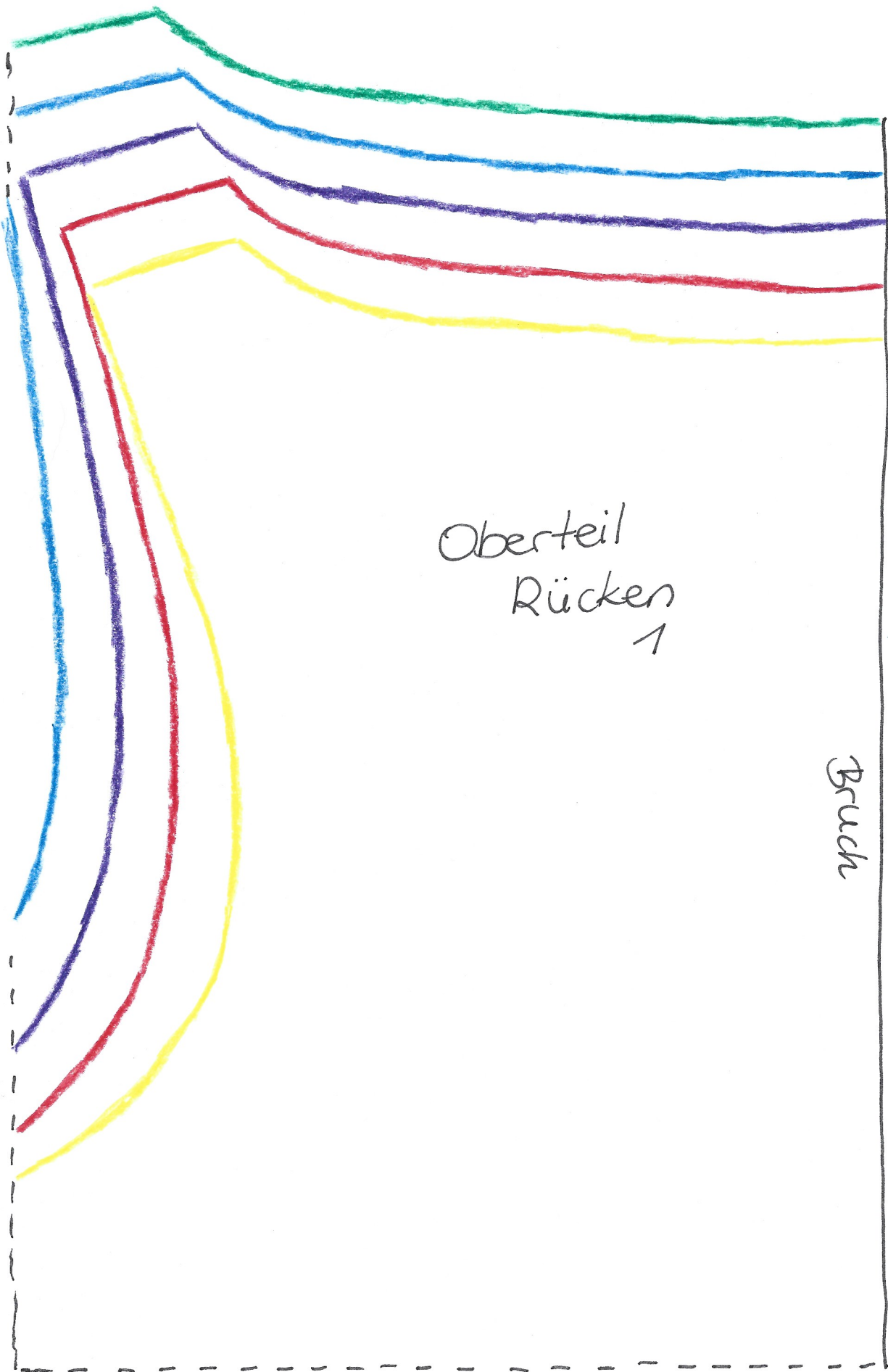






Ober teil
Vorderseite
3

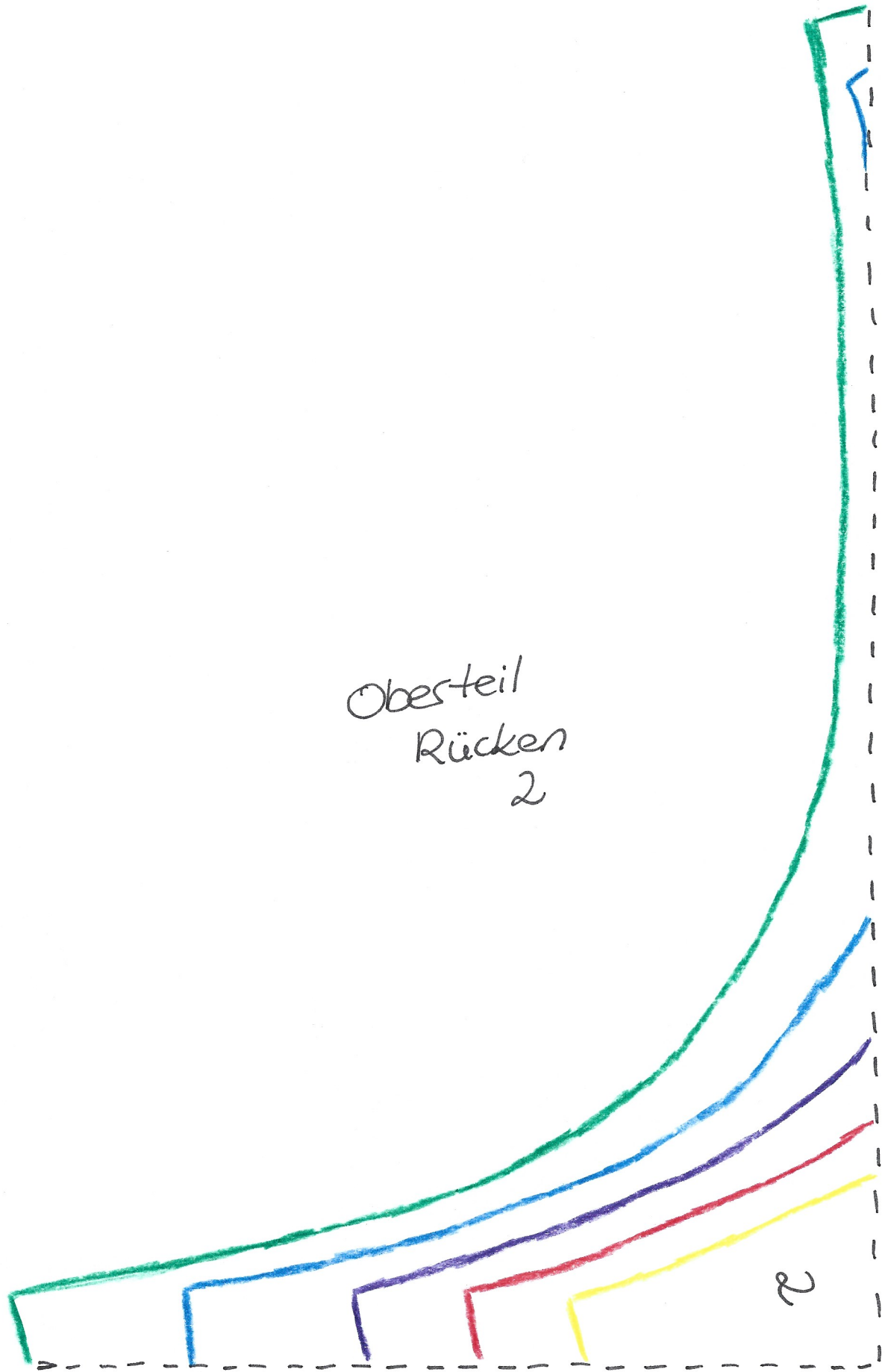


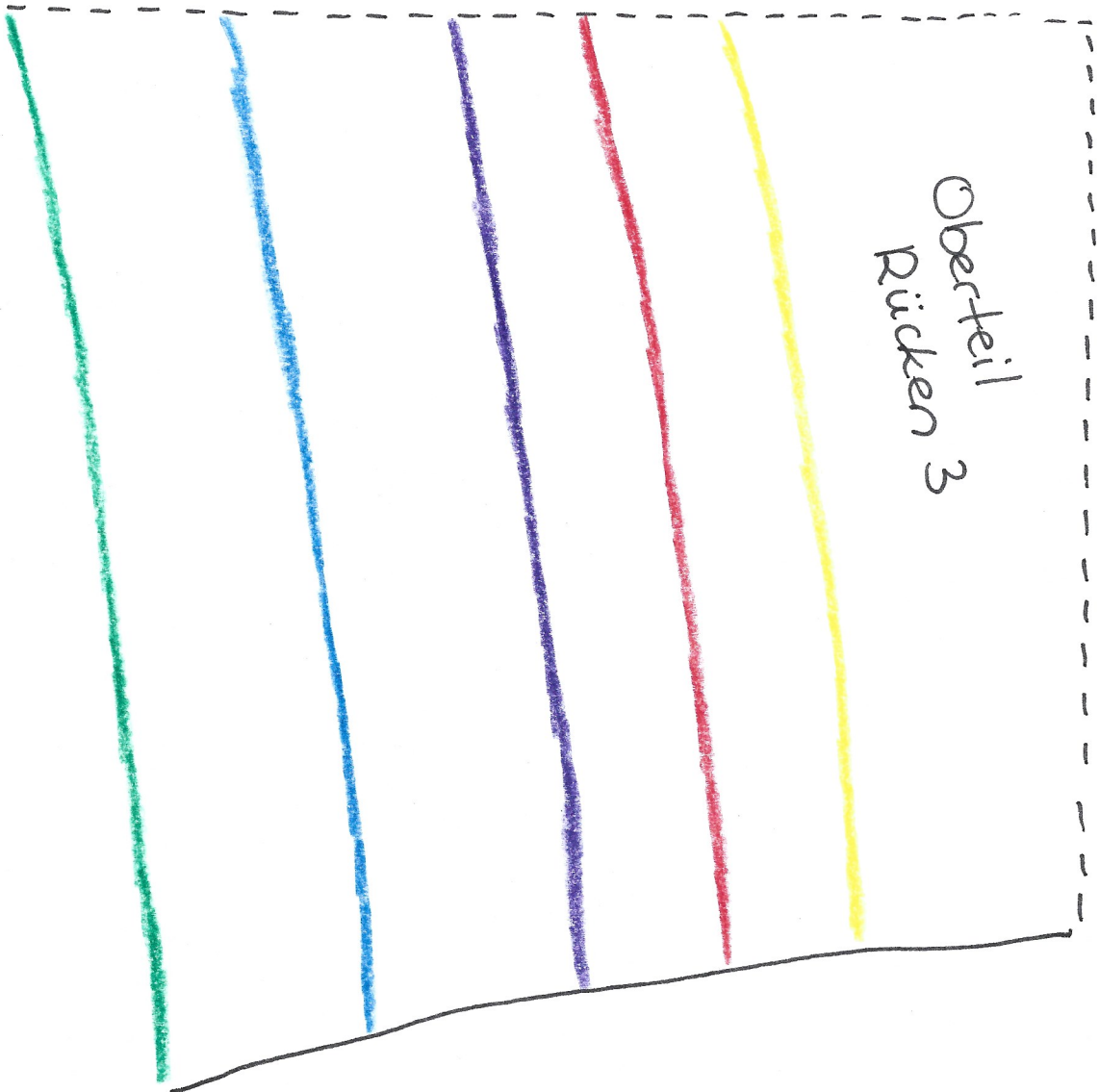


Oberteil
Rücken
1

Bruch

Obersteil
Rücken
2






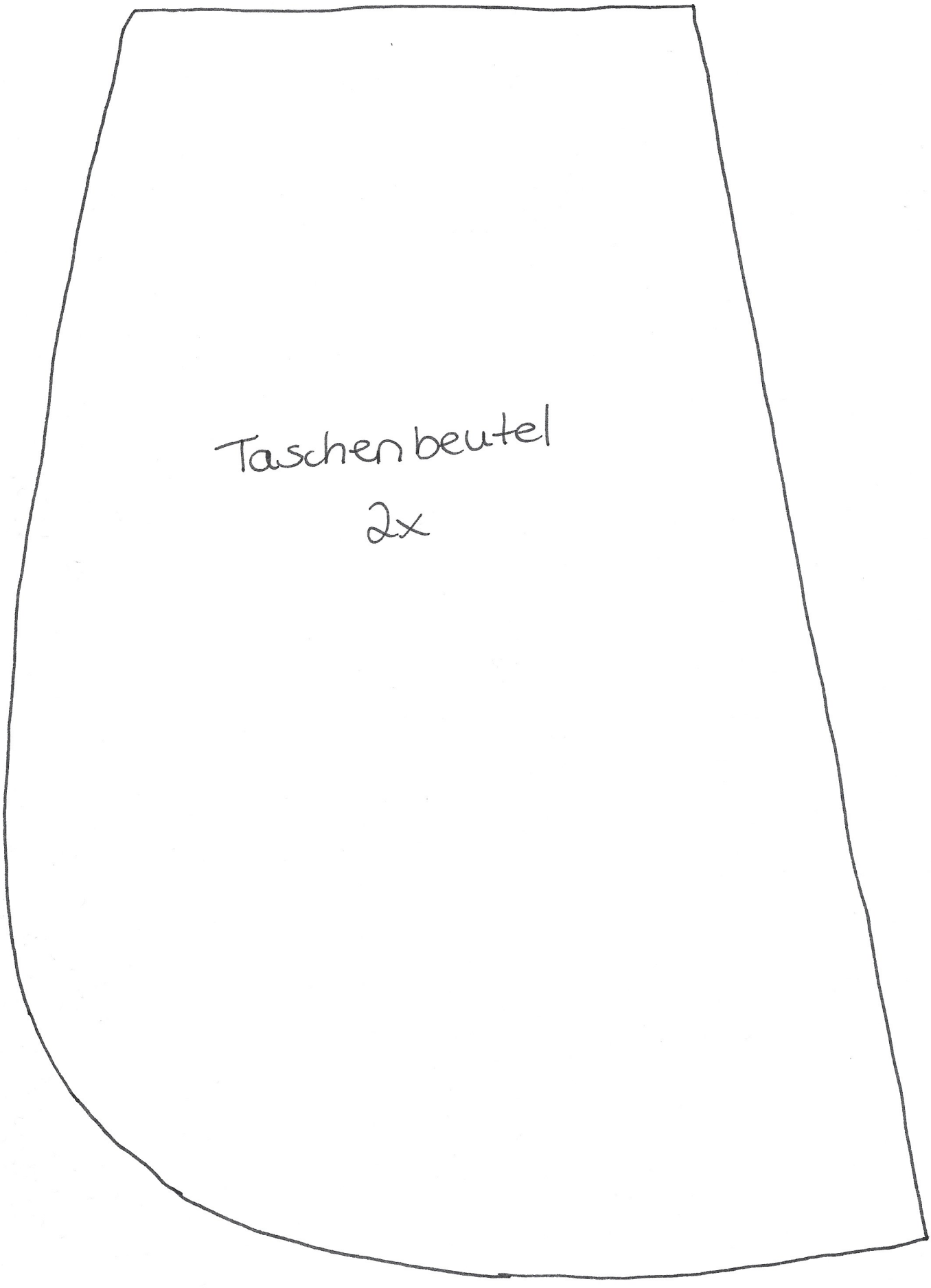
Ober-teil
Rücken 3

Oberteil
Rücken
4

Bruch

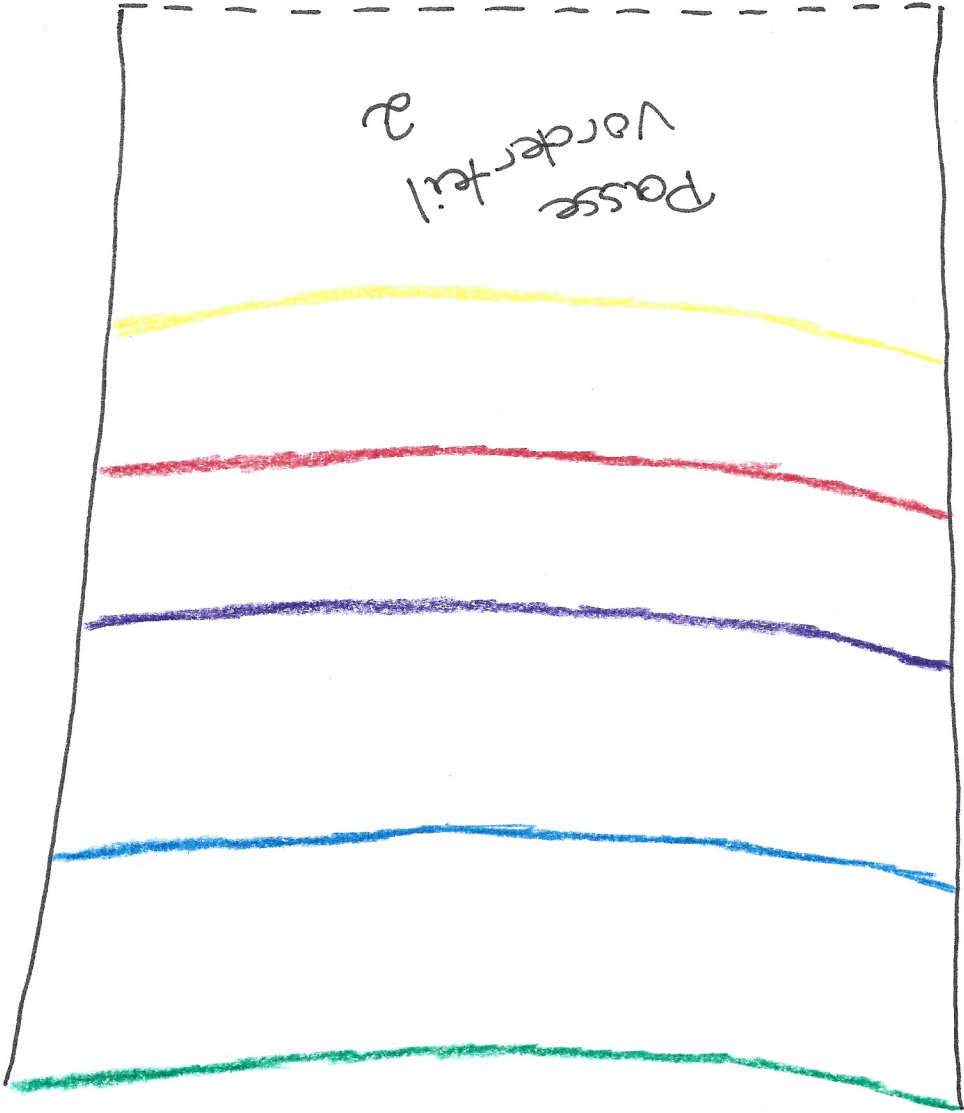


Taschenbeleg
2x

A hand-drawn black outline of a bag pattern piece on a white background. The shape is roughly trapezoidal with a curved bottom edge. The top edge is slightly irregular. The text 'Taschenbeutel' and '2x' is written in the center of the shape.

Taschenbeutel

2x



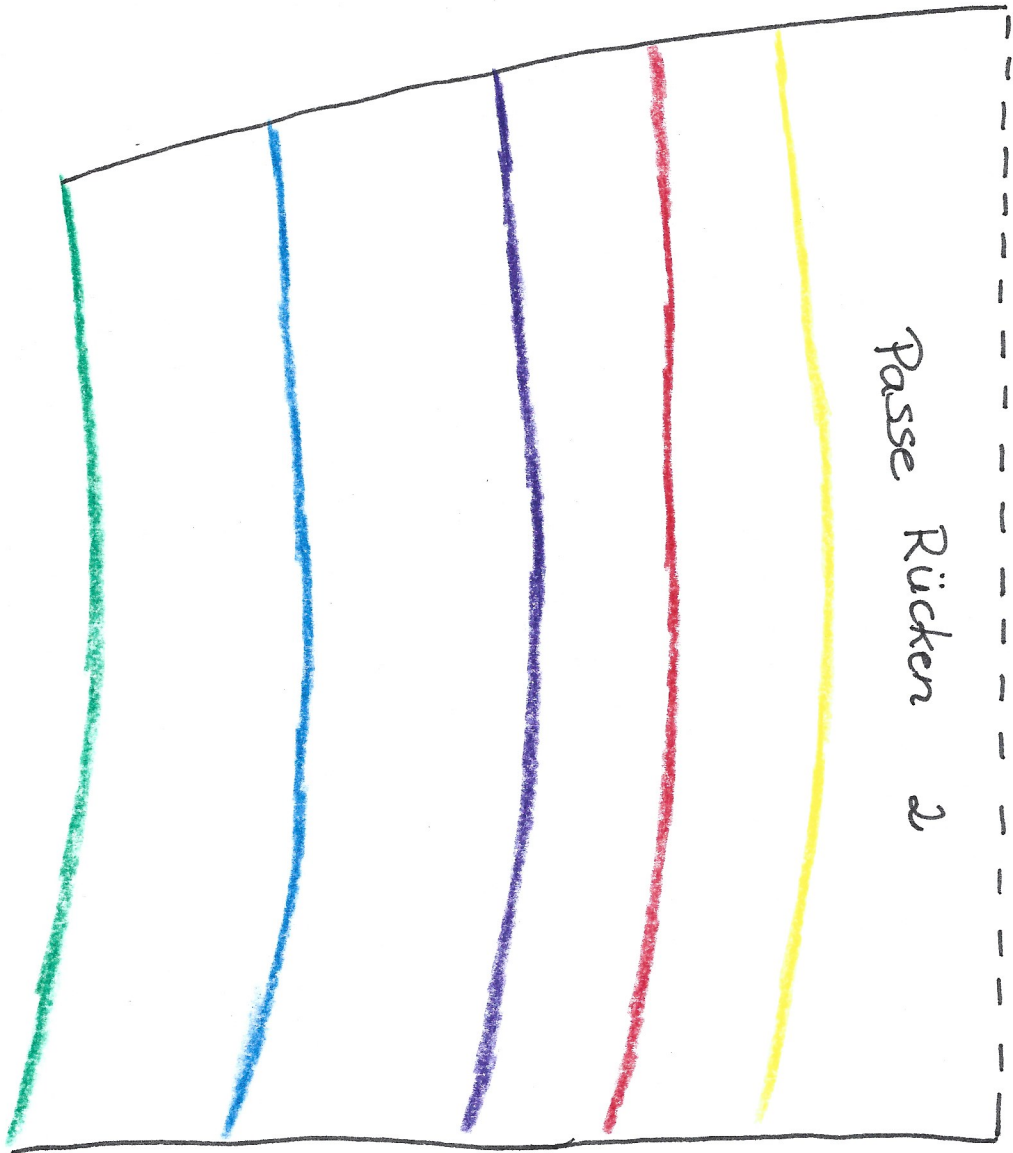
Passe
Vorder teil
2

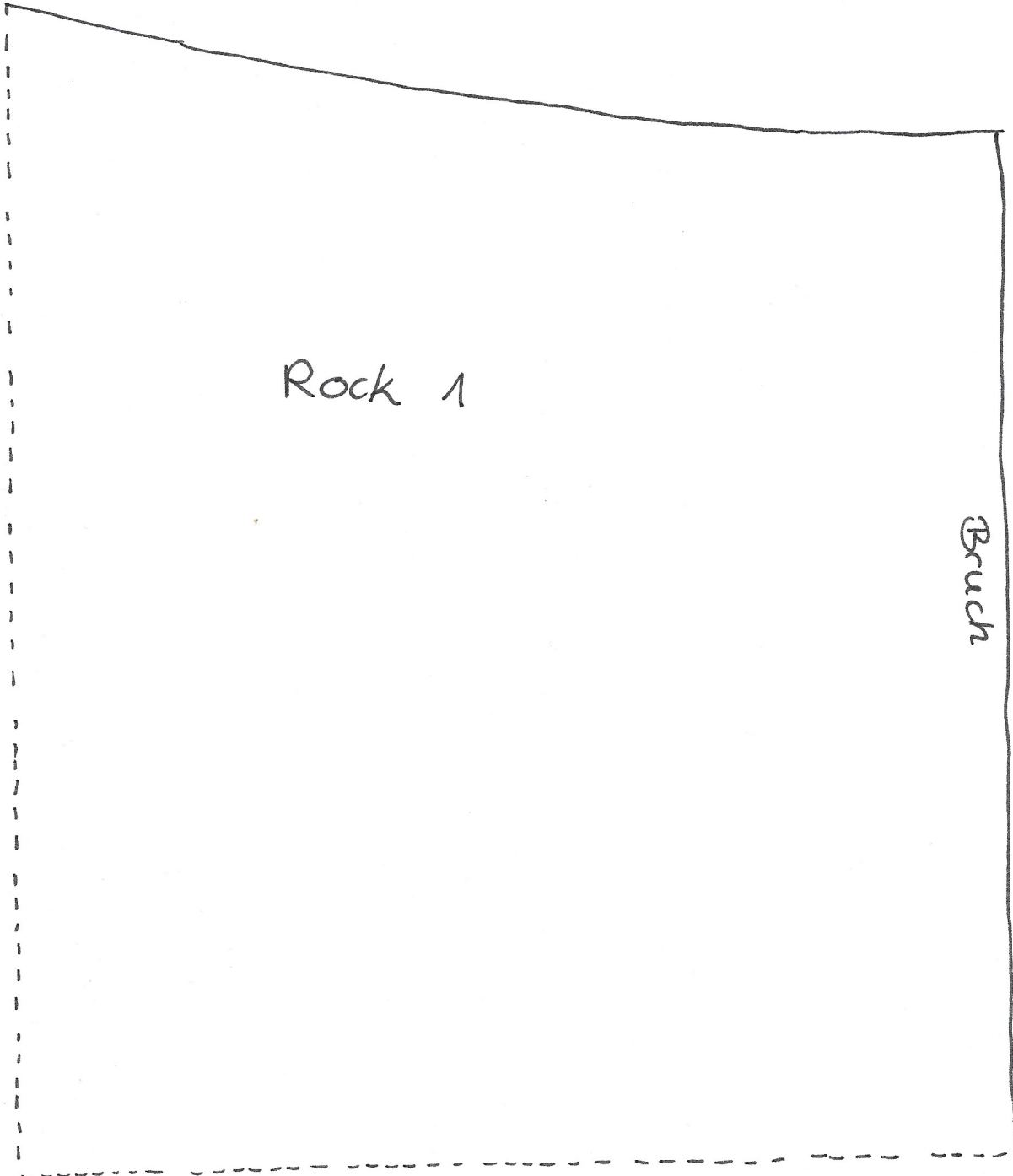
Bruch

Passe
Vorderteil
7

Bruch

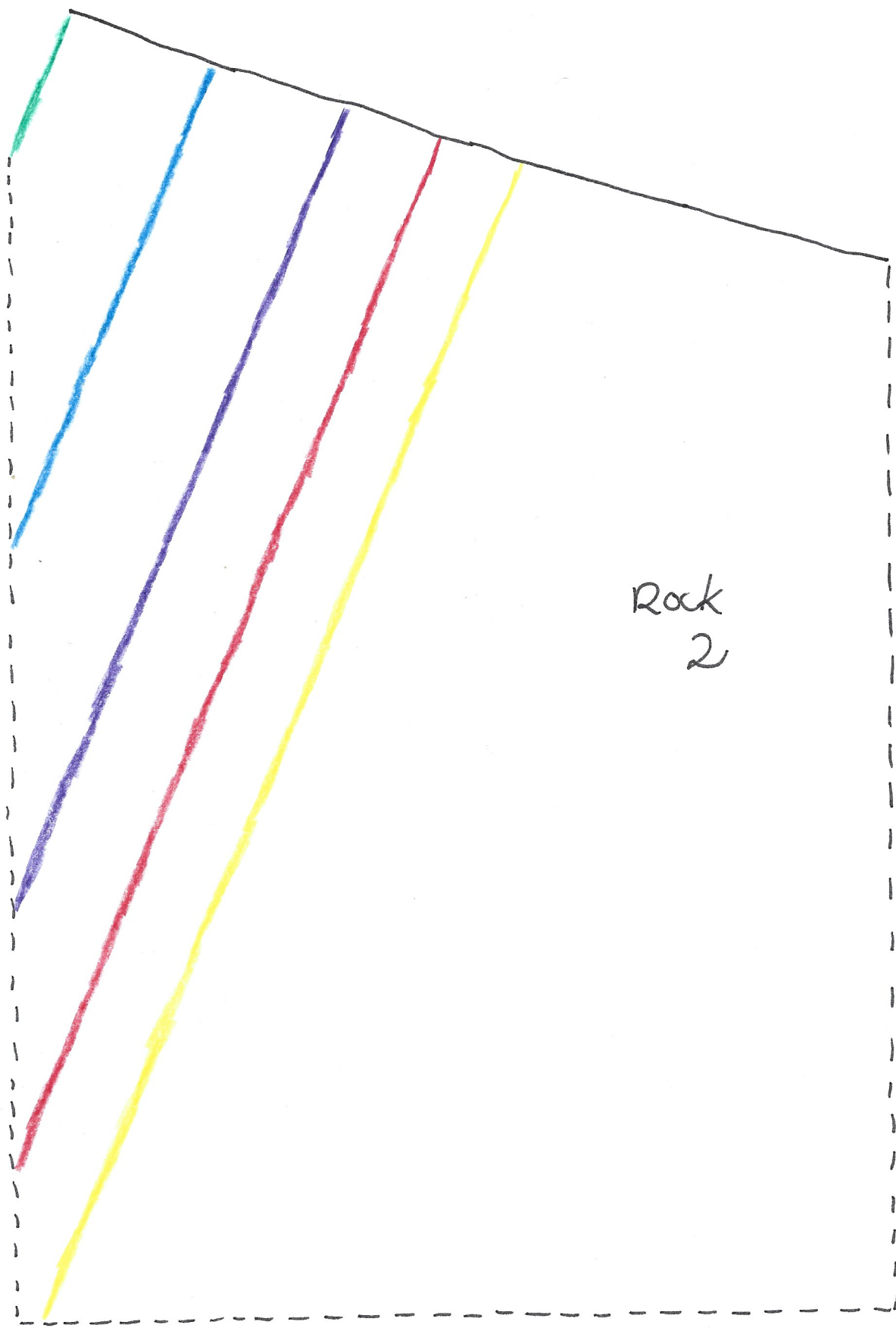
Passe
Rücken 1



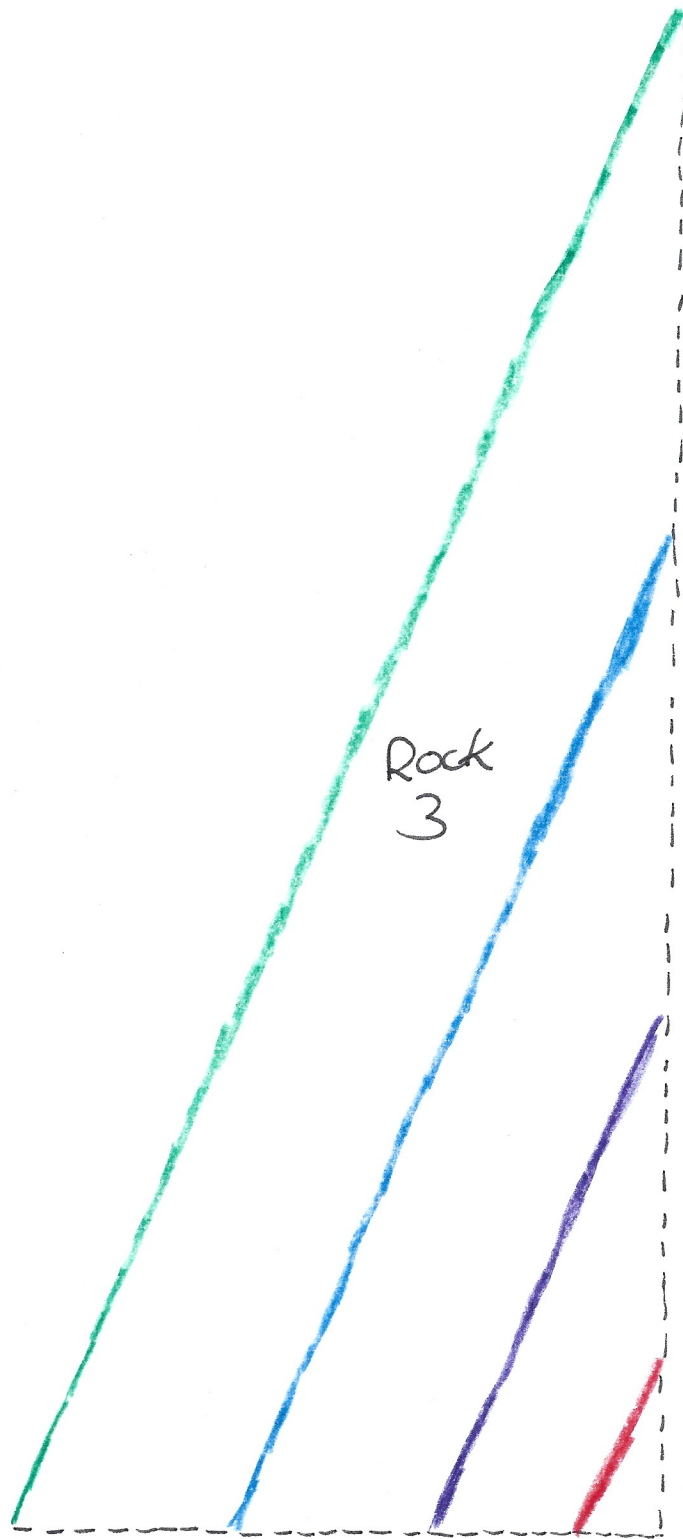


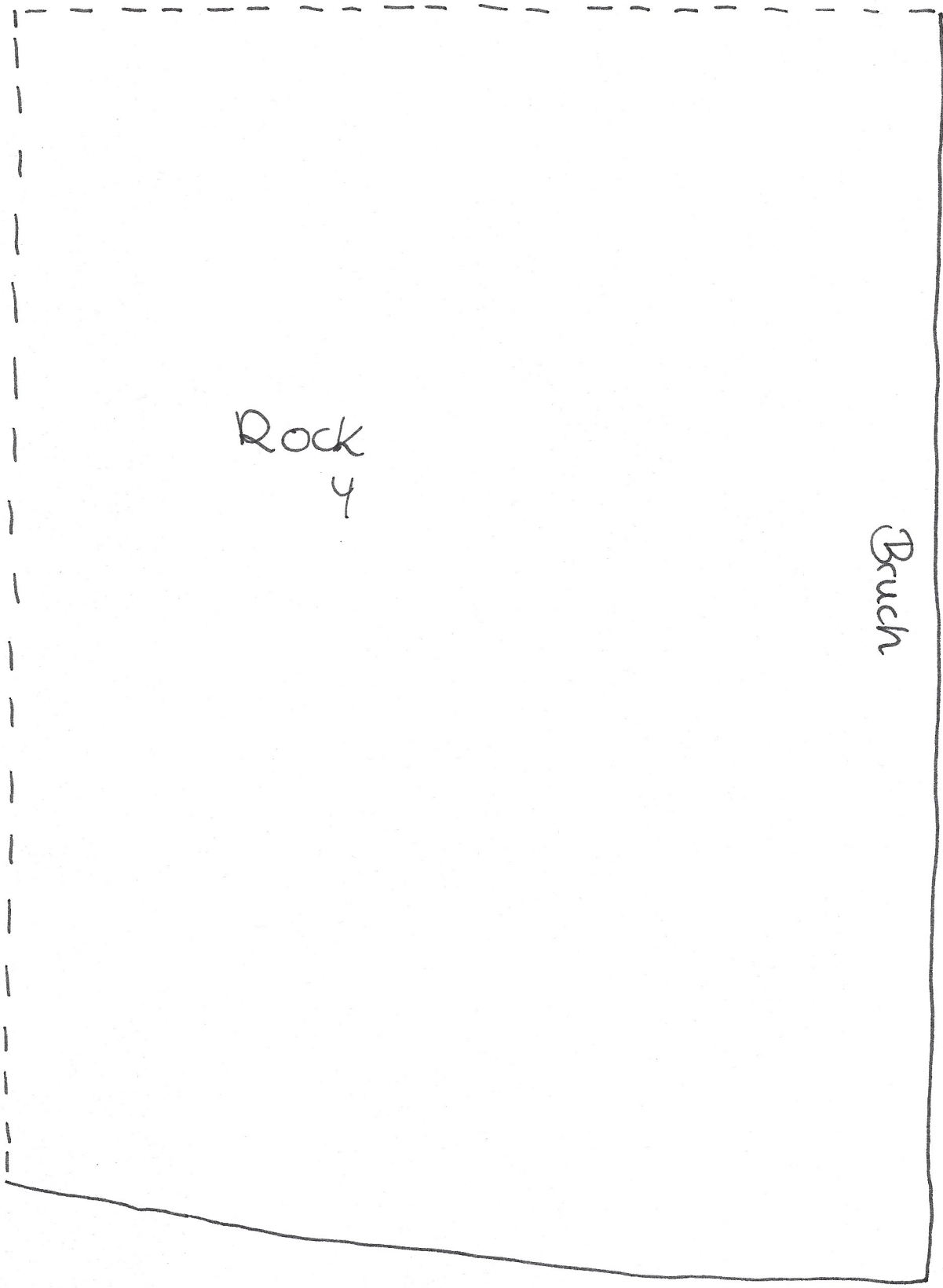
Rock 1

Bruch



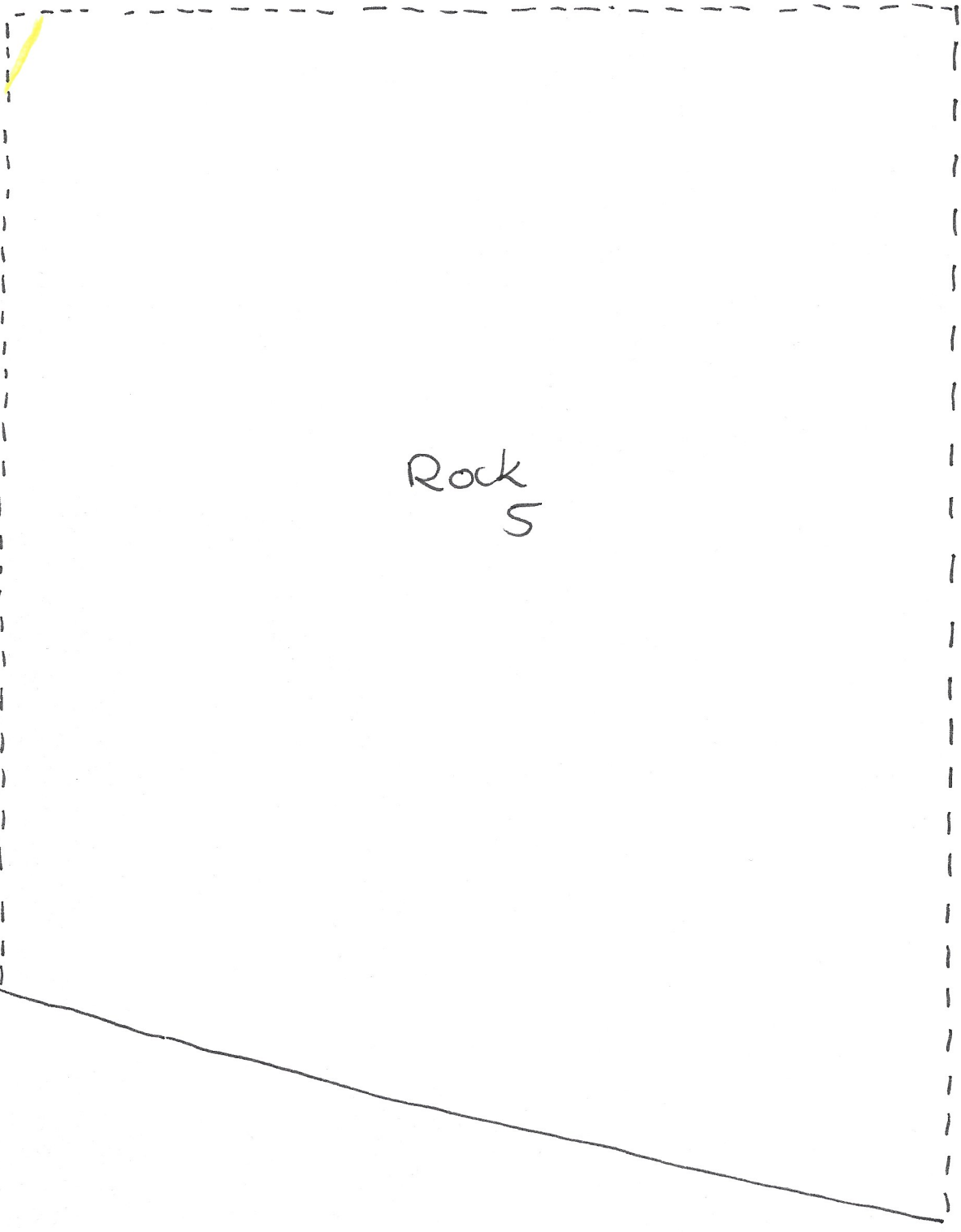
Rock
2



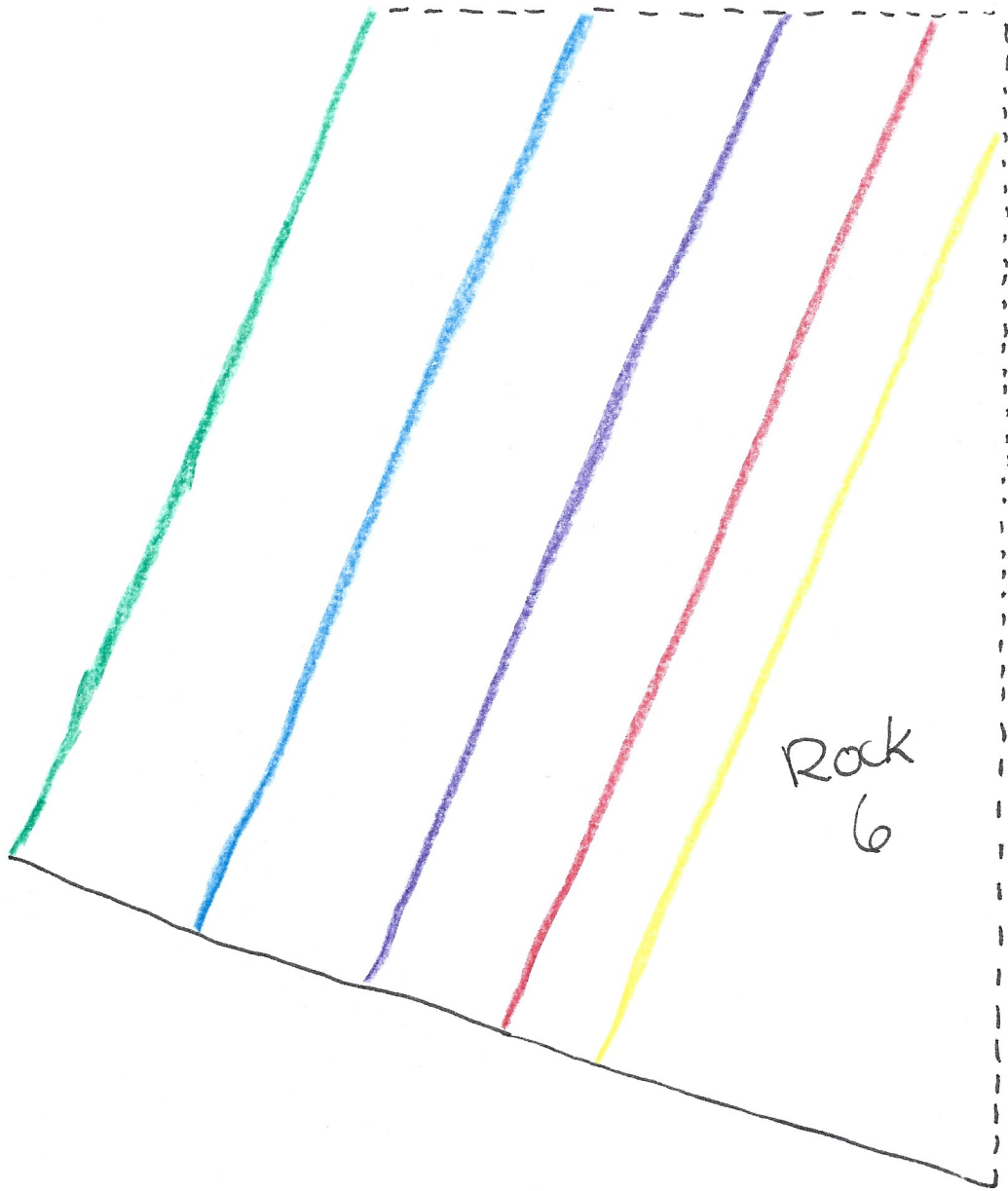


Rock
4

Bruch



Rock
5



Rock
6